

## Mystwood Manor v0.6.1.7 Staff Image Gallery Guide

Listed by order of appearance

Claim the outfits for the girls by completing each of their tier events and unlocking your reward. You are not required to check on the girls at any of the locations you assign them to in order to get the images shown in this guide. [Requirements](#) to unlock rewards may include staff and hotel levels as well as the appropriate rooms having already been renovated.



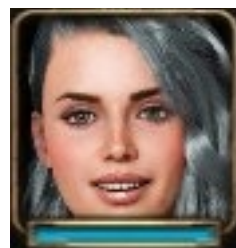
Julia



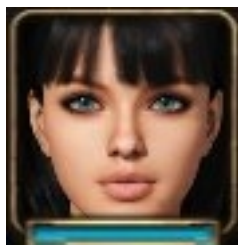
Amber



Riley



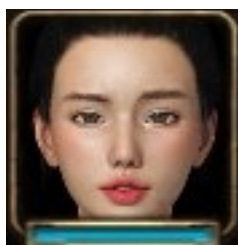
Kay



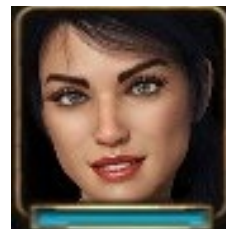
Laura



Annika



Hana



Catalina



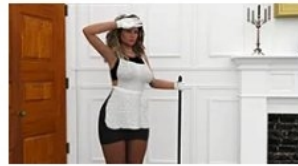
Julia



Assign her to housekeeping.



Assign her to housekeeping (requires outfit level 2).



Assign her to housekeeping (requires outfit level 3).



Assign her to housekeeping (requires outfit level 4).



Assign her to housekeeping (requires outfit level 5).



Assign her to the Study (requires hotel level 3 to renovate the Study).



Don't assign her to any tasks.



Don't assign her to any tasks (requires outfit level 2).



Don't assign her to any tasks (requires outfit level 3).



Don't assign her to any tasks (requires outfit level 4).



Don't assign her to any tasks (requires outfit level 5).



Amber



Assign her to housekeeping.



Assign her to housekeeping (requires outfit level 2).



Assign her to housekeeping (requires outfit level 3).



Assign her to housekeeping (requires outfit level 4).



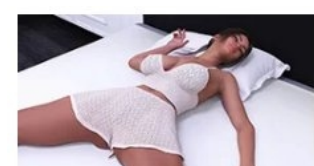
Assign her to housekeeping (requires outfit level 5).



Assign her to the Study (requires hotel level 3 to renovate the Study).



Don't assign her to any tasks.



Don't assign her to any tasks (requires outfit level 2).



Don't assign her to any tasks (requires outfit level 3).



Don't assign her to any tasks (requires outfit level 4).



Don't assign her to any tasks (requires outfit level 5).





Riley



Assign her to the Study (requires hotel level 3 to renovate the Study).



Don't assign her to any tasks.



Don't assign her to any tasks (requires outfit level 2).



Don't assign her to any tasks (requires outfit level 3).



Don't assign her to any tasks (requires outfit level 4).



Don't assign her to any tasks (requires outfit level 5).





Kay



Assign her to the maintenance room (requires hotel level 2).



Assign her to the maintenance room (requires outfit level 2).



Assign her to the maintenance room (requires outfit level 3).



Assign her to the maintenance room (requires outfit level 4)



Assign her to the Study (requires hotel level 3 to renovate the Study).



Don't assign her to any tasks.



Don't assign her to any tasks (requires outfit level 2).



Don't assign her to any tasks (requires outfit level 3).



Don't assign her to any tasks (requires outfit level 4).





Laura



Assign her to Healthcare (requires hotel level 3).



Assign her to Healthcare (requires outfit level 2).



Assign her to Healthcare (requires outfit level 3).



Assign her to Healthcare (requires outfit level 4).



Assign her to Healthcare (requires outfit level 5).



Assign her to the Study (requires hotel level 3 to renovate the Study).



Don't assign her to any tasks.



Don't assign her to any tasks (requires outfit level 2).



Don't assign her to any tasks (requires outfit level 3).



Don't assign her to any tasks (requires outfit level 4).



Don't assign her to any tasks (requires outfit level 5).



Annika



Assign her to the Study (requires hotel level 3 to renovate the Study).



Don't assign her to any tasks.



Don't assign her to any tasks (requires outfit level 2).



Don't assign her to any tasks (requires outfit level 3).



Don't assign her to any tasks (requires outfit level 4).



Hana



Assign her to Security  
(requires hotel level 4).



Assign her to Security  
(requires outfit level 2).



Assign her to Security  
(requires outfit level 3).



Assign her to Security  
(requires outfit level 4).



Assign her to the Study  
(requires hotel level 3 to  
renovate the Study).



Don't assign her to any  
tasks.



Don't assign her to any  
tasks (requires outfit  
level 2).

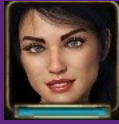


Don't assign her to any  
tasks (requires outfit  
level 3).



Don't assign her to any  
tasks (requires outfit  
level 4).





Catalina



Assign her to the study.



Don't assign her to any tasks.



Don't assign her to any tasks (requires outfit level 2).



Don't assign her to any tasks (requires outfit level 3).



Don't assign her to any tasks (requires outfit level 4).



## Requirements



In this example, in order to unlock and claim Amber's next tier reward, it's required the hotel and staff levels are at 3.

Other requirements will include having Housekeeping (hotel level 1), Maintenance (hotel level 2), Healthcare (hotel level 3), Study (hotel level 3) and Security (hotel level 4) renovated.

Others will require the girls resting (not assigned to any tasks).

