



Element-174 Official Walkthrough (v0.20)

This is a walkthrough for the adult visual novel, Element-174 by Knotty Games. We will try to make it as spoiler-free as possible, but given that it is a gameplay guide that can sometimes be unavoidable. Also please note that this walkthrough is for a game that is in development and is subject to change.

Please visit patreon.com/knottygames to support this game!


At the end of this guide, flowcharts are provided with all the major choices in the game and which character(s) gain points from that decision. As the story progresses, certain point thresholds must be met in order to continue down that character's route. The flowchart indicates the highest number of points that can be obtained for each character at that point in the story (e.g. *Isabella* 3 at the end of Day 2). It is also possible to earn maximum points with multiple characters (at least early on in the story). Characters marked as 1/2 or 1/3 indicate a late first meeting with that character. For example, *Rachel* 1/2 at the end of Day 2 means her first point or second point (if you already met her).


TABLE OF CONTENTS

1. [Ash](#)
2. [Caroline](#)
3. [Chloe](#)
4. [Emma](#)
5. [Holmes](#)
6. [Isabella](#)
7. [Jenna](#)
8. [Jules](#)
9. [Katy](#)
10. [Madison](#)
11. [Malia](#)
12. [Penny](#)
13. [Rachel](#)
14. [Sarah](#)
15. [Trish](#)
16. [Zoey](#)
17. [Daily Flowcharts](#)


Flowchart Icons

Starting on Episode 2 (Day 8), there are also additional icons for the flowchart that describe what the scene's importance is. Here are their descriptions:


 Green Flag – These scenes are needed to advance along a character's route. Green flags indicate the first time a required scene is offered. If they are not seen after they are offered a second time, then that character's route ends.

 Red Flag – These scenes are needed to advance along a character's route. Red flags indicate the final time a required scene is offered. Any characters with unviewed red flag scenes have their routes ended by the next day or at the end of the week.

 Pink Flag – A scene with significant sexual content.

 Light Blue Flag – A scene with a secondary choice that may affect game endings or might be required in order to activate sub-routes.

 Black Flag – A scene where a character can potentially die or be removed from the game.

 Blue Flag with Numbers – These are usually numbered 1-4 and determine the priority that an option has when compared with other choices at the time. The game will present choices for the two highest point women. Then it selects the lowest number flag in the case of a tie. Using the first choice at the start of episode 2, here are some examples of which options would be chosen (given that they met all yellow requirements).

Madison (4), Trish (3), Emma (3) = Madison (highest) and Trish (her 2 beats Emma's 3)

Madison (4), Emma (4), Sarah (5) = Sarah (highest) and Madison (her 1 beats Emma's 3)

Trish (3), Emma (4), Sarah (3) = Emma (highest) and Trish (her 2 beats Emma's no flag)

To achieve maximum points for a particular character while keeping open any character sub-routes/endings, please follow the guide below:

Give Zoey pen
Check out club
Go to art class ¹
Tell him ³

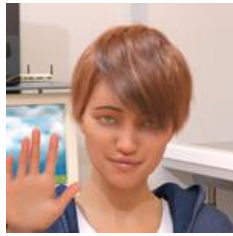
White = Choices that lead to scenes with points but offer no points towards other viable girls

Red = Choices that give a point towards that character (important, but not always required)

Green = Choices that earn points w/ other viable characters

Blue = Choices that affect this character's sub-routes or endings

- Superscript notes provide additional info for each choice as well as potential planning



Ash

Day 1	Day 2	Day 3	Day 4	Day 5
Give Zoey pen	Skip/Art Class ¹	Sure/Sorry ³	Defend/Bully ⁶	[3 possible] ⁹
Ignore Caleb	Decline Zoey	Tell him/Don't ⁴	[3 possible] ⁷	Leave them ¹⁰
Check out club	Take the blame ²	Pizza/Explore ⁵	[3 possible] ⁸	Ero-games club ¹¹
				Lie ¹²

¹ Go to art class for **Jules** or skip it for Rachel. Rachel's route can't be completed on Ash's route, but this scene is needed to advance a sub-route with Sarah

² If this is **Ash's** third point, then her route is secured through Week 1 allowing freedom for other routes

³ Point for **Penny** or **Zoey**. Both routes are active at end of Week 1 regardless

⁴ Choose "Tell him" for **Jenna** or "Don't" for **Sarah**. Both Jenna and Sarah share a sub-route with Ash

⁵ Choose "Pizza" for **Emma** or "Downtown" for **Jules**. Avoid Emma here if on Sarah's sub-route

⁶ Point for **Jenna** sub-route (Defend) or **Jules** (Bully)

⁷ Visit Dorms for Rachel (leads to Sarah), the Science Lab for Trish (leads to Emma) or neither for **Penny**

⁸ Choose "Chaos" for **Emma**, "Order" for **Chloe** or "Classic Movie" for **Sarah's** sub-route. It's too late to start Katy's route here, and Malia and Caroline's routes are incompatible with Ash's at the end of Week 2

⁹ If you defended on Day 4, choose "Watch Video" for **Chloe** or "Sit Down for **Penny**.

¹⁰ It's too late for Madison's route here so choose a point for **Emma** (helps to not be on Sarah sub-route)

¹¹ A point for **Ash** or **Sarah**, if you're on her sub-route. This scene will secure Sarah if she's at 2 points

¹² In order to keep Ash's Jenna sub-route open, you need to lie for **Jules** here

Day 6	Day 7	Day 8	Day 9	Day 10
Help/Answer ¹	[3 possible] ³	Slowly/Emma ⁶	Jenna/Rachel ⁹	Sarah/Rachel ¹²
Go to the movies ²	[3 possible] ⁴	Jenna/Penny ⁷	Tuesday club ¹⁰	Wednesday club ¹³
See Jenna in alley	[3 possible] ⁵	Fastfood/Camgirl ⁸	Visit Jules/Chloe ¹¹	[3 possible] ¹⁴

¹ Point for **Penny** or Malia. If you wish to keep Chloe's route open, it helps to answer Malia here

² Go to the movies for **Ash's** 5th and final point this week or **Sarah** if on her sub-route

³ In order to keep the Jenna sub-route open, you need to visit **Jules**. Meet up with Malia to secure Chloe later or do neither (Caroline) to get a point for Rachel (her final point to secure if on Sarah sub-route)

⁴ Crossing the street here secures **Jenna** sub-route, going to **Rachel's** dorm to possibly secure hers or go to the library to grab **Chloe's** last 2 points this week

⁵ Point for **Emma**, **Penny** or **Chloe**. Chloe's is required to secure her route

- ⁶ Go to class slowly to continue **Sarah's** sub-route or a point for **Emma** here if you're still on her route
- ⁷ Necessary **Jenna** sub-route scene or a point **Penny**. Caroline may be here, but her route is non-viable with Ash's at the end of week
- ⁸ Point for **Malia** here if you're still on her route. Otherwise a point for **SluttyDemon**
- ⁹ Non-necessary **Jenna** sub-route scene or a necessary point for **Rachel**, if her route is still open
- ¹⁰ Non-necessary ero scene for **Ash**. Otherwise a point for **Emma** or Caroline here
- ¹¹ Necessary scene for **Jules** or **Chloe** here if you're still on their routes. Both can be pushed back
- ¹² Non-necessary ero scene for **Sarah** sub-route or one of two necessary scenes for **Rachel**
- ¹³ Necessary scene for **Ash** that can be pushed back later, otherwise non-necessary ero **Jenna** scene
- ¹⁴ Point for **Penny**, Malia or Caroline. Malia and Caroline will become non-viable at the end of the week

Day 11	Day 12	Day 13	Day 14	
[3 possible] ¹	[3 possible] ⁴	[3 possible] ⁷	Arcade w/ Ash ¹⁰	
Don't offer ²	Ash Lesson ⁵	[3 possible] ⁸	Rachel*	
Zoey/Malia ³	Chloe ⁶	[3 possible] ⁹	Sarah/Jules ¹¹	
			Don't Kill/Kill ¹²	

¹ Necessary scene for **Chloe** that can be pushed back, last chance necessary scene for **Rachel** or an ero scene for **Emma**

² Necessary point for **Ash** if you don't go to Jenna's house, but can be pushed back to Day 12. If you don't know Ash's secret yet, this is your last chance to stay on her route. Otherwise, points for **Jules** or **Jenna**. Jenna's ero scene also features Ash, but only earns a point for Jenna and doesn't reappear

³ Point for **Zoey**, **Chloe** or Malia. Chloe's scene is a last chance to keep her route open

⁴ Non-necessary ero scenes for **Zoey**, **Rachel** or last chance to learn **Sarah's** secret

⁵ Non-necessary ero scene for **Ash**, or one of two necessary scenes for **Jules** or **Emma**

⁶ Non-necessary ero scene for **Chloe**. Malia might also be available but non-viable

⁷ A non-necessary **Sarah** sub-route scene. Otherwise, last chance necessary scene for **Jules** or a non-necessary ero scene for her or a last chance scene for **Emma**

⁸ A necessary ero scene for **Jenna** sub-route. Otherwise or a non-necessary ero scenes for **Zoey** or **Rachel**. None of the scenes during this time repeat again

⁹ A necessary **Emma** scene which won't reoccur, a last chance non-necessary ero scene for **Chloe** or a non-necessary ero scene for **Penny**

¹⁰ A necessary **Ash** scene which won't reoccur. Needed to continue her route into Week 3. Also, don't tell Holmes about Ash otherwise Ash's route will end

¹¹ Necessary scenes for **Sarah** sub-route or **Jules**. Needed to continue their routes into Week 3

¹² Don't kill to keep the **Stranger's** route open for Week 3 (needs 7+ points). Otherwise, let her die



Caroline

Day 1	Day 2	Day 3	Day 4	Day 5
Ignore Zoey	Text back/Ignore ¹	Sure/Sorry ⁴	Bully Madison	Goto AD's office
Punch Caleb	Study science ²	He/I started it ⁵	Lab/Don't visit ⁷	Eavesdrop/Leave ⁸
Apologize ¹	Research ³	Pizza/Explore ⁶	Assistant Dean	Lie/Give info ⁹

¹ Point for **Caroline** or don't apologize for **Holmes** if you wish to start Caroline's Holmes sub-route

¹ Point for **Emma** or **Malia**. Starts either of their routes, although Malia's route is non-viable after Week 2

² Point for **Trish**. This begins Caroline's Trish sub-route, otherwise a point for **Madison**

³ Point for **Trish**. Helps with the Trish sub-route. Otherwise it's a point for **SluttyDemon**

⁴ Point for **Penny** or **Zoey**. Both routes are active at end of Week 1 regardless

⁵ Choose "He started it" for **Trish** or "I started it" for **Holmes**. Both are Caroline sub-routes either way

⁶ Point for **Emma** or **Jules**

⁷ Point for **Penny** that leads to a Caroline scene. If you're not trying for full Caroline points, visiting the lab gives a point for **Trish** and **Emma** (Chloe is non-viable in Caroline route)

⁸ Point for **Emma** or **Madison**. Only choose Eavesdrop if you've already met Madison

⁹ Point for **Jules** or **Holmes**

Day 6	Day 7	Day 8	Day 9	Day 10
Help/Answer ¹	Don't visit Jules ⁴	[3 possible] ⁷	Ask Holmes ¹⁰	Rachel/Madison ¹²
Restaurant ²	Walk with Caroline	Visit Caroline ⁸	Confront her	Look for Trish
Say hello ³	Kiss/Don't kiss ⁵	Fastfood Malia ⁹	Jules/Side street ¹¹	Visit apartment ¹³
	Emma/Penny ⁶			Sleep w/ her/Don't

¹ Point for **Penny** or **Malia**. Malia's route may still be open if you gave up one of Caroline's points earlier although not recommended since Malia can't be progressed beyond Week 2 during Caroline's route

² Point for **Madison**. Sarah route is never viable while on Caroline route

³ Point for **Trish** or **Holmes**. This ensures that Caroline's sub-route for either of these two girls remains active next week. The other girl will be locked out next week

⁴ A **Caroline** point can be given up in order to keep **Jules** route active next week. Malia's point and the following scenes for Chloe or Rachel are all non-viable

⁵ The choice here has an impact towards which ending Caroline's route leads to. Make another save here. By not kissing her here and on Day 10, you will be offered anal on Day 14

⁶ Point for **Emma** or **Penny** here if either of them have 3+ points and your phone number

⁷ Points are available for **Emma** and **Madison** if their routes are still open. **Trish** also has a non-necessary scene here if you're looking to continue down her sub-route

⁸ The **Caroline** point here can be given to **Penny** instead (the only other route possible here)

⁹ Point for Malia here if you're still on her route. Only viable option for Caroline's route at this point

¹⁰ Necessary scene for **Holmes** sub-route, if it's still active, but can be pushed back to Day 10

¹¹ Point for **Jules** or **Madison** if you're still on either of their routes

¹² Ero scene for **Madison** or last chance scene for **Holmes** previous scene

¹³ Non-necessary ero scene for Caroline. Make a different save for choosing to sleep with her or not. If you want to be offered anal by her on Day 14, don't sleep with her. Otherwise a non-necessary ero scene for **Holmes** sub-route

Day 11	Day 12	Day 13	Day 14	
Chloe/Emma ¹	Visit Caroline ³	Jules/Emma ⁶	Caroline's Apt. ⁸	
Check on Jules*	[3 possible] ⁴	Movie with Zoey*	Holmes/Madison ⁹	
Zoey/Malia ²	[3 possible] ⁵	[4 possible] ⁷	Jules*	
			Don't Kill/Kill ¹⁰	

¹ Necessary scene for **Chloe** that can be pushed back later or a non-necessary ero scene for **Emma**

² Point for **Zoey** or Malia, if her routes are still open

³ Necessary scene for Caroline that won't repeat. In order to continue her route, you must do this now

⁴ A necessary scene for Madison which won't reoccur. Otherwise, one of two necessary scenes for Jules or Emma

⁵ Necessary scenes for **Trish** or **Holmes** sub-routes. Otherwise an ero scene for **Chloe**

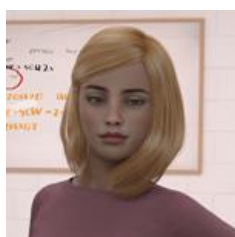
⁶ Last chance necessary scene for **Jules** or a non-necessary ero scene for her or a last chance scene for **Emma**

⁷ A necessary scene for **Trish's** sub-route which won't reoccur or one of two **Holmes** sub-route ero scene. Otherwise, a necessary **Emma** scene which won't reoccur or a non-necessary ero scene for **Penny**

⁸ A necessary **Caroline** scene which won't reoccur. Needed to continue her route into Week 3. Also, if you didn't kiss or sleep with her on Days 6 and 10 respectively, you'll be offered anal sex

⁹ Necessary scenes for **Holmes** sub-route or **Madison**. Needed to continue their routes into Week 3

¹⁰ Don't kill to keep the **Stranger's** route open for Week 3 (needs 7+ points). Otherwise, let her die



Chloe

Day 1	Day 2	Day 3	Day 4	Day 5
Give pen/Don't ¹	Art Class ³	Sure/Sorry ⁶	Defend ⁹	Watch video ¹²
Ignore Caleb	[3 possible] ⁴	Don't tell him ⁷	Visit lab/Dorms ¹⁰	Eavesdrop/Leave ¹³
Check out club ²	Act offended ⁵	[3 possible] ⁸	Order ¹¹	Goto club/Else ¹⁴
				Lie ¹⁵

¹ Not giving the pen here opens up an alternate Chloe route. If you choose to ignore Zoey here, you open up the possibility to keep Madison (who shares a sub-route with her) or Trish's route open at the cost of one less Chloe point on Day 2. In order to secure Chloe's route on Day 7, you need to speak with her on Day 2, 4 or 5. Otherwise she won't speak to you and her route ends

- ² Point for Ash who will become non-viable at the end of Week 2 if on Chloe's route
- ³ Point for **Jules** who shares a sub-route with Chloe. Otherwise a point for **Rachel** (only viable if you ignored Zoey)
- ⁴ If you gave Zoey the pen, decline her here to start Chloe's route after. If you ignored Zoey, choose History to start **Madison's** sub-route or Science for **Trish**
- ⁵ If you gave Zoey the pen and went to the club, you get **Chloe's** first point here. If you went for tutoring, choose Library for **Rachel**, go home for **Sarah**, research for **Trish** or camgirls for **SluttyDemon**
- ⁶ Point for **Penny** or **Zoey**. Both routes are active at end of Week 1 regardless
- ⁷ Point for **Sarah**. A later Chloe requirement makes Jenna's route non-viable with Chloe's
- ⁸ Choose Pizza for **Emma**, Macarons for **Madison** or Explore Downtown for **Jules**
- ⁹ Choose to defend **Madison** if going for max Chloe points or Madison's sub-route. Choose to bully whoever if going for **Jules** sub-route (at the cost of a Chloe point on Day 5)
- ¹⁰ If you have more Rachel points than Chloe, Trish and Emma combined, you might go to **Rachel's** dorm here. Otherwise you'll visit **Trish** at the science lab (which leads into a Chloe point)
- ¹¹ Choose Order for **Chloe's** point (only 1 needed before Day 7) or Chaos for **Emma**. If you went to the dorms, choose Classic Movie for **Sarah**. Katy is non-viable on Chloe's route
- ¹² Choose to Watch Video for another **Chloe's** point (only 1 needed before Day 7) or Sit Down for **Penny**. If you bullied on Day 4, you can start **Malia's** route by not going to the assistant dean's office. Caroline is non-viable on Chloe's route, however
- ¹³ Choose Eavesdrop to secure **Madison's** sub-route (if she has at least 1 point before here). Otherwise a point for **Emma**
- ¹⁴ Point for **Sarah** or Ash (who becomes non-viable at the end of Week 2)
- ¹⁵ Point for **Jules**. Alternatively, you can Give Information here as long as you Answer Malia on Day 6

Day 6	Day 7	Day 8	Day 9	Day 10
Answer/Help ¹	Meet with Malia ⁴	[4 possible] ⁶	Rachel ⁸	[3 possible] ¹¹
Restaurant/Sarah ²	Go to library ⁵	Talk with Penny*	[3 possible] ⁹	Trish/Ash ¹²
Say hello/Watch	Keep listening ⁵	Watch Camgirls ⁷	Visit Chloe ¹⁰	[3 possible] ¹³
Go left ³				

- ¹ Point for **Malia**. Alternatively, you can Help **Penny** as long as you didn't Lie for Jules on the previous night
- ² If she has 2 points already and you've eavesdropped on her, you can secure **Madison's** sub-route here. Otherwise a point for **Sarah**
- ³ If **Trish** has 2 points already, you can secure her route by trying to Say Hello to Jenna and then going left. Otherwise, it's a point for non-viable Jenna
- ⁴ Point for **Malia** that leads into a necessary scene to stay on Chloe's route
- ⁵ A required scene to keep **Chloe's** route active in Week 2
- ⁶ **Sarah** is the easiest scene to get here. **Madison**, **Emma** and **Trish** are all possible by not giving Zoey the pen. You lose a Chloe point on Day 2, but can earn an extra one if on the Madison sub-route later
- ⁷ Point for **SluttyDemon** here that helps with the route. Otherwise a necessary **Malia** scene that occurs again on Day 10
- ⁸ **Rachel's** route may still be open if you saw her twice on Day 2 and then went to her dorm on Day 4
- ⁹ Point for Ash (who becomes non-viable at end of week). **Trish's** route may be open if you didn't give Zoey the pen and/or punched Caleb. **Emma's** route may be open if you punched Caleb. Both of these earlier choices potentially take a point away from Chloe's max

¹⁰ Necessary scene for **Chloe** that can be pushed back to Day 11. To activate the **Jules** sub-route, you need to go to the mansion here and agree to her plan. Caution: This sub-route isn't very nice to Chloe for most of it, but still has the potential to end well for her. A necessary scene for **Madison's** sub-route is also here, but it reoccurs the following night

¹¹ Point for **Madison, Sarah**, or a necessary scene for **Rachel**

¹² Point for **Trish** or Ash, if their routes are still open

¹³ Last chance necessary scene for **Malia** (or non-necessary ero if you already saw it), a last chance necessary scene for **Madison** sub-route, or an ero scene with **Penny**

Day 11	Day 12	Day 13	Day 14	
Contact Chloe ¹	[3 possible] ⁴	[3 possible] ⁷	Visit Chloe ¹⁰	
Ash/Jules ²	[4 possible] ⁵	[3 possible] ⁸	Madison/Rachel ¹¹	
Zoey/Malia ³	Visit Chloe ⁶	[4 possible] ⁹	Jules/Sarah ¹²	
			Don't Kill/Kill ¹³	

¹ Necessary scene here for **Chloe**. Alternatively, it can be pushed back to Day 12 if you want **Sarah's** or **Emma's** point here

² Points for Ash or a necessary **Jules** sub-route scene that can be pushed back to Day 12, but conflicts with a one chance Madison sub-route scene

³ Last chance for **Chloe's** necessary Day 9 point if you skipped it earlier, an ero scene with **Zoey** if at 5+ points or a necessary **Malia** scene which can be pushed back later

⁴ Last chance for Chloe's Day 11 morning scene if you missed it then. Otherwise, last chance for a necessary **Sarah** scene, or an ero scene for **Zoey** or **Rachel**.

⁵ Go Downtown for a necessary **Madison**-sub route which won't reoccur, so choose it here to stay on it. Also one of two necessary scenes for **Jules** sub-route or **Emma**, or one of two ero scenes for Ash

⁶ A non-necessary ero scene with **Chloe** which can be pushed back the following night, a necessary scene for **Trish** which won't reoccur or a last chance necessary scene for **Malia**

⁷ Last chance necessary scene for **Jules** sub-route or a non-necessary ero scene for her. Otherwise, a last chance scene for **Emma** or a **Sarah** ero scene

⁸ Non-necessary ero scenes for **Zoey, Malia** or **Rachel**. None of the scenes during this time repeat again

⁹ Last chance for **Chloe's** Day 12 evening scene. Otherwise, a necessary scene for **Trish** or **Emma** which won't reoccur or a non-necessary ero scene for **Penny**

¹⁰ A necessary **Chloe** scene which won't reoccur. Needed to continue her route into Week 3

¹¹ Necessary scenes for **Madison** sub-route or **Rachel**. Needed to continue their routes into Week 3

¹² Necessary scenes for **Jules** sub-route or **Sarah**. Needed to continue their routes into Week 3

¹³ Don't kill to keep the **Stranger's** route open for Week 3 (needs 7+ points). Otherwise, let her die



Emma

Day 1	Day 2	Day 3	Day 4	Day 5
Give pen/Ignore ¹	Text back ⁴	Sure/Sorry ⁷	Bully/Defend ¹⁰	[4 possible] ¹³
Punch/Ignore ²	Decline/Science ⁵	[6 possible] ⁸	Visit lab ¹¹	Leave them ¹⁴
[4 possible] ³	[7 possible] ⁶	Order Pizza ⁹	Chaos ¹²	Lie/Give info ¹⁵

¹ You can give **Zoey** the pen or ignore her if you want to start the Madison sub-route on Day 2. Emma only need 3 points by the end of Week 1 so she has some flexibility early on

² Choose Punch to start Emma's route on Day 2 or Ignore to start the Jules sub-route on Day 2 (by sacrificing Emma's point then)

³ If you punched Caleb, apologize for **Caroline** or don't for **Holmes**. If you met Joey, attend the club for **Ash** or don't for **Isabella**

⁴ If you punched Caleb, text back to meet **Emma** here or Ignore text for **Malia**. If you ignored him, skip art class for **Rachel** or attend it to start **Jules** sub-route

⁵ If you met Zoey, choose Decline for **Ash** or **Isabella**. If you haven't met Zoey or want the **Madison** sub-route, choose History to meet her. Otherwise choose Science for **Trish**

⁶ Choose to act offended for **Chloe**, take the blame for **Ash**, Sharks for **Isabella** point, Reapers for Sarah, Research for **Trish**, Library for **Rachel** or Camgirls for **SluttyDemon**. Note: In order to earn Emma's Day 4 point, she will need higher points than Rachel by then

⁷ Choose Sure for **Penny**, Sorry for **Zoey**. Both routes are active at end of Week 1 regardless

⁸ If you went to the club, tell Joey for **Jenna** or don't for **Sarah**. If you punched Caleb, choose He Started It for **Trish** or I Started it for **Holmes**. If you did neither, leave the campus for **Isabella** or don't for **Rachel**

⁹ Choose Pizza for **Emma**, Macarons for **Madison** sub-route or Downtown for **Jules** sub-route

¹⁰ Choose Bully for **Jules** or for later Malia or Caroline points, otherwise choose to Defend **Madison** or **Jenna** for later Chloe or Penny points

¹¹ Choose to go to the lab for **Trish** (leads into Emma and Chloe), the dorms for **Rachel** (later Sarah) or neither for **Penny**

¹² If you went to the lab, choose Chaos for **Emma** or you can sacrifice Emma's point to start **Chloe's** route. This is the earliest you can secure Emma's route if it's her 3rd point. If you went to the dorms, choose Classic Movie for **Sarah** (Katy is non-viable). If you did neither, you can choose **Caroline** for her point or "Dean Blakeman" to start **Malia's** route

¹³ Choose Watch Video for **Chloe**, Sit Down for **Penny**, Office for **Caroline**, Think About It for **Malia**

¹⁴ Choose to "Leave Them" for an **Emma** point. However, if you're on **Madison's** sub-route you need to Eavesdrop here in order to continue it. An extra opportunity to regain that Emma point comes later

¹⁵ Choose to lie to help secure **Jules** sub-route. Otherwise a point for **Holmes**

Day 6	Day 7	Day 8	Day 9	Day 10
Help her/Answer ¹	[3 possible] ⁵	Trail Emma ⁸	Rachel/Holmes ¹⁰	[4 possible] ¹³
Restaurant ²	[3 possible] ⁶	[3 possible] ⁹	Go with Emma ¹¹	Trish/Isabella ¹⁴
[4 possible] ³	Meet Emma ⁷	Camgirls/Malia	[3 possible] ¹²	[5 possible] ¹⁰
Go left/Go right ⁴				

¹ Point for **Penny** or **Malia**. Choosing Answer also keeps Chloe's route open if on hers

² Go to the restaurant for **Madison's** sub-route or stay with **Sarah**. Ash's route is non-viable later

³ If **Isabella** has 3+ points, see her at Bob's Corner to secure her route. Otherwise choose Just Watch for Jenna (non-viable), or Say Hello to secure either Trish or Holmes route immediately after

⁴ Choose Go left to secure **Trish's** route, choose Go Right to secure **Holmes** route

⁵ Meet **Jules** for her sub-route (later Caroline), or see **Malia** (later Chloe or Rachel) or choose neither for **Caroline**. Choose Malia to secure Chloe's route

⁶ Another point for **Caroline**, go to the library for a necessary point to secure **Chloe's** route or a point for **Rachel**

⁷ A point for **Emma** that can be sacrificed to secure **Chloe's** route by continuing to listen, or a point for **Penny**

⁸ A necessary scene for **Emma** that can be pushed back to Day 9. Otherwise a necessary scene for **Sarah**, or points for **Madison** sub-route or **Trish**

⁹ A necessary scene for **Isabella** that won't reoccur, or ero scenes for **Penny** or **Caroline**

¹⁰ Necessary scenes for **Rachel** or **Holmes** that can be pushed back later

¹¹ A scene for **Emma** that opens up sub-routes. Make multiple saves here. Otherwise, it's her previous necessary scene or necessary scenes for **Trish** or **Caroline**

¹² To activate the **Jules** sub-route, you need to go to the mansion at this point. A necessary scene for **Madison's** sub-route is also here, but it reoccurs the following night. Same with a necessary **Chloe** scene which reoccurs on Day 11

¹³ If you went to the social club the night before, an ero scene for the **Madison** sub-route plays here. Otherwise one of two necessary scenes for **Rachel**, a last chance necessary scene for **Holmes** or an ero scene for **Sarah**

¹⁴ Last chance necessary scene for **Trish** or a necessary scene for **Isabella** which reoccurs. Ash may also still be available, although her route conflicts with Emma's at the end of Week 2

¹⁵ Last chance necessary scene for **Madison** sub-route. Otherwise ero scenes for **Malia**, **Penny**, **Caroline** or **Holmes**. Malia's also is a last chance if you haven't gone to the fastfood place with her yet

Day 11	Day 12	Day 13	Day 14	
Find Emma ¹	[6 possible] ⁴	[3 possible] ⁷	[4 possible] ¹⁰	
Check on Jules ²	Confront Emma ⁵	[3 possible] ⁸	[3 possible] ¹¹	
[3 possible] ³	[4 possible] ⁶	Answer backdoor ⁹	Jules/Sarah ¹²	
			Don't Kill/Kill ¹³	

¹ An ero scene with another opportunity to tell **Emma** about the Element. Otherwise, last chance necessary scene for **Rachel**, or necessary scenes for **Sarah** and **Chloe** that be pushed back later

² Necessary scene for the **Jules** sub-route which can be pushed back to Day 12. Otherwise a last chance necessary scene for **Isabella**

³ Last chance for Chloe's necessary scene, a necessary scene for **Malia**, or an ero scene for **Zoey**

⁴ Last chance scenes for Chloe, Caroline and Sarah. Otherwise ero scenes for **Zoey, Rachel** or **Isabella**

⁵ One of two necessary **Emma** scenes here, the latter of which can be pushed back to Day 13 or one of two necessary **Jules** sub-route scenes. Necessary scene for **Madison** sub-route which does not reoccur, so choose to go downtown here if you wish to stay on it. Also an ero scene for Ash

⁶ Necessary scenes for **Holmes** and **Trish** which won't reoccur, a last chance necessary scene for **Malia** or an ero scene for **Chloe**

⁷ Last chance for **Emma's** Day 12 necessary scene or last chance necessary scene for **Jules** sub-route or a non-necessary ero scene for her. Otherwise, one of two non-necessary ero scenes for **Isabella** or a last chance ero scene for **Sarah**

⁸ A non-necessary ero scene for **Zoey, Rachel** or **Malia**. None of the scenes during this time repeat again

⁹ A necessary scene for **Emma's** route which does not reoccur. Emma will die if you don't see her here

¹⁰ Necessary scenes for **Malia, Caroline** or **Chloe**. Needed to continue their routes into Week 3

¹¹ Necessary scenes for **Madison** sub-route, **Rachel** or **Isabella**. Needed to continue their routes into Week 3. Also, don't see Holmes or tell her about Emma, otherwise it will end Emma's route

¹² Necessary scenes for **Jules** sub-route or **Sarah**. Needed to continue their routes into Week 3

¹³ Don't kill to keep the **Stranger's** route open for Week 3 (needs 7+ points). Otherwise, let her die



Holmes

Day 1	Day 2	Day 3	Day 4	Day 5
Ignore Zoey	Text back/Ignore ²	Sure/Sorry ⁵	Defend/Bully ⁷	[4 possible] ¹⁰
Punch Caleb	Study history ³	I started it	[3 possible] ⁸	Eavesdrop/Leave ¹¹
Do what I want ¹	Library/Go home ⁴	Pizza/Macarons ⁶	[4 possible] ⁹	Give information ¹²

¹ Choose "Do what I want" for **Holmes's** first point or apologize for a point towards **Caroline's** sub-route. If going for both Caroline and Malia's sub-routes, you need to apologize here

² Choose "Text back" for **Emma** or ignore to start **Malia's** sub-route. If going for both Caroline and Malia's sub-routes, you need to meet Malia here

³ Point for **Madison**. Trish's route is not viable on Holmes's

⁴ Point for **Rachel**. Sarah's route isn't viable on Holmes's

⁵ Point for **Penny** or **Zoey**. Both routes are active at end of Week 1 regardless

⁶ Choose Pizza for **Emma** or Macarons for **Madison**

⁷ Choose Bully to if you want to earn points for Caroline or Malia's sub-route on Day 5. Otherwise defend **Madison** for her point

⁸ Choose Dorm for **Rachel** (later Katy or Sarah, both non-viable), Science Lab for Trish (later Chloe or Emma), or neither for **Penny** (Malia or Caroline)

⁹ Choose Blakeman for **Malia's** sub-route or **Caroline** for her sub-route. Choose Order to starts **Chloe's** route or Chaos to continue **Emma's** route. All other choices are non-viable. If going for both Caroline and Malia's sub-routes, going for Caroline here is needed

¹⁰ Choose Office for **Caroline**, Think About It for **Malia**, Watch Video for **Chloe**, Sit Down for **Penny**. If going for Malia and Caroline, going for Caroline here is needed

¹¹ Choose Eavesdrop for necessary **Madison** scene. Choose Leave Them for **Emma**

¹² Giving info isn't necessary for **Holmes**, but she needs to have 3 points by Day 6. Otherwise, a necessary point for **Jules**. Not helping Jules also makes it easier for Malia's Day 7 scene to trigger

Day 6	Day 7	Day 8	Day 9	Day 10
Help her/Answer ¹	Malia/Don't meet ³	Trail/Hurry class ⁶	Ask about Florist ⁹	Rachel/Madison ¹²
Restaurant ²	[3 possible] ⁴	Penny/Caroline ⁷	Emma/Caroline ¹⁰	[No scene]
Say hello	[3 possible] ⁵	Camgirls/Malia ⁸	[3 possible] ¹¹	Eat with Holmes ¹³
Go right				

¹ Point for **Penny** or point for **Malia's** sub-route. Choosing Answer also keeps Rachel or Chloe's route open if on theirs. If going for both Caroline and Malia's sub-routes, you need to answer Malia here

² Point for **Madison**. Ash and Sarah are both non-viable

³ Point for **Caroline's** sub-routes or a necessary **Malia** scene. Choose Malia if going for Rachel or Chloe, or trying to secure Malia's sub-route after securing Caroline's. Otherwise, a point for **Jules** if you lied for her earlier

⁴ Point for **Caroline's** sub-route, **Rachel** or **Chloe** (choose library) here

⁵ Point for **Emma**, **Penny** or necessary **Chloe** scene, depending on previous choice

⁶ Necessary scene for **Emma** that can be pushed back. Otherwise a point for **Madison**

⁷ Ero scenes for **Penny** or **Caroline** sub-route

⁸ Necessary scene for **Malia** sub-route that can be pushed back. Otherwise, a point for **SluttyDemon**

⁹ Necessary ero scene for **Holmes**, but can be pushed back to earn a point for **Rachel** here

¹⁰ Necessary scene for **Caroline** sub-route. Otherwise, a point for **Emma**

¹¹ Necessary scenes for **Jules**, **Madison** or **Chloe**. Jules's will not reoccur, but the other two will

¹² Last chance scene for Holmes, one of two necessary scenes for **Rachel** or an ero scene with **Madison**

¹³ Non-necessary non-reoccurring ero scenes for **Holmes**, **Caroline** and **Malia**. Otherwise, a necessary scene for **Madison** scene or an ero **Penny** scene

Day 11	Day 12	Day 13	Day 14	
[3 possible] ¹	[4 possible] ³	Jules/Emma ⁶	[3 possible] ⁹	
Jules*	[3 possible] ⁴	[3 possible] ⁷	Out w/ Holmes ¹⁰	
[3 possible] ²	Invite Holmes ⁵	Holmes ⁸	Jules*	
			Don't Kill/Kill ¹¹	

¹ Necessary scene for **Chloe**, last chance necessary scene for **Rachel** or an ero scene for **Emma**

² Necessary ero scene for **Malia** which is recommended to be taken here. Otherwise, last chance for Chloe's Day 9 scene or an ero scene for **Zoey**

³ Necessary scene for **Caroline** which won't reoccur, last chance scene for **Chloe** or ero scenes for **Rachel** or **Zoey**

⁴ One of two necessary scenes for **Emma** or **Jules**, or a necessary scene which won't reoccur for **Madison**

⁵ Necessary ero scene for **Holmes** which can be pushed back a day. Otherwise, a last chance **Malia** scene for an ero scene for **Chloe**

⁶ Last chance necessary scene for **Jules** or a non-necessary ero scene for her, or a last chance scene for **Emma**

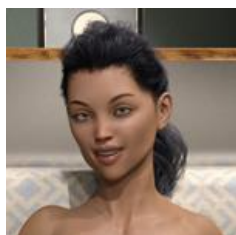
⁷ A non-necessary ero scene for **Malia's** sub-route. Otherwise, non-necessary ero scenes for **Zoey** or **Rachel**. None of the scenes during this time repeat again

⁸ One of two **Holmes** ero scenes or a non-necessary **Penny** sub-route ero scene. Otherwise, a necessary **Emma** scene which won't reoccur or a last chance non-necessary ero scene for **Chloe**

⁹ Necessary scenes for **Caroline** sub-route or **Malia** sub-route. Needed to continue their routes into Week 3. If you managed to see Ash's sub-route here, you can give her up to Holmes

¹⁰ A necessary **Holmes** scene which won't reoccur. Needed to continue her route into Week 3. This will end Ash's, Emma's and Sarah's routes

¹¹ Don't kill to keep the **Stranger's** sub-route open for Week 3 (needs 7+ points). Otherwise, let her die



Isabella

Day 1	Day 2	Day 3	Day 4	Day 5
Give Zoey Pen	Art class/Skip ¹	Sure/Sorry ³	Defend/Bully ⁶	[4 possible] ⁹
Ignore Caleb	Decline	Go home ⁴	[3 possible] ⁷	Leave them ¹⁰
Don't go to club	Sharks ²	Pizza/Downtown ⁵	[4 possible] ⁸	Lie ¹¹

¹ Go to art class to start **Jules** sub-route. Otherwise a point for **Rachel**

² Choose Sharks for **Isabella**, or you can sacrifice this point to begin her **Sarah** sub-route

³ Point for **Penny** or **Zoey**. Both routes are active at end of Week 1 regardless

⁴ Choose to go home for an **Isabella** point. However, if you want to continue Sarah's sub-route, you need to meet Rachel on campus here

⁵ Choose Downtown for **Jules** sub-route or Pizza for **Emma**. Also, avoid Emma if on Sarah sub-route

⁶ Choose Bully for another **Jules** point, or to start either Malia or Caroline's route later. Choose Defend for a point for Madison or if you want to start Chloe's route or a point for Penny later. Madison's route becomes non-viable with Isabella's at the end of Week 2

⁷ Choose the dorms for a **Rachel** point which leads into Sarah after. Choose Science for Trish and to get a point for Chloe or Emma after. Trish's route is non-viable with Isabella's. Choose Don't Visit to start **Malia's** route

⁸ Choose a Classic Movie for **Sarah's** sub-route. If you went to the lab, it's a point for **Chloe** or **Emma**. Otherwise you can start **Malia's** route here. Katy's route is non-viable with Katy's

⁹ Choose Watch Video for **Chloe**, Sit Down for **Penny**, Office for **Caroline**, Think About It for **Malia**

¹⁰ Choose Leave Them for **Emma**. Madison's route is later non-viable

¹¹ Lying for **Jules** here is necessary for her sub-route. Holmes route is non-viable as well

Day 6	Day 7	Day 8	Day 9	Day 10
Help her/Answer ¹	[3 possible] ³	Slowly/Trail Emma ⁶	Rachel ⁹	[3 possible] ¹²
Stay with Sarah ²	[3 possible] ⁴	Take CPR class ⁷	Emma/Caroline ¹⁰	Lunch w/ Isabella
Bob's Corner	[3 possible] ⁵	Camgirls/Malia ⁸	Jules/Chloe ¹¹	[3 possible] ¹³

¹ Point for **Penny** or **Malia**. Choose Malia if you want to keep Chloe's or Rachel's route open. Choose Help Her if you want to keep Caroline's route open

² If you've been following the **Sarah** sub-route choices, stay with her to secure her for next week. Otherwise, choose Restaurant for a Madison point

³ Point for **Jules** sub-route which leads into Jenna (non-viable), or a point for **Malia** (leads into required 2 Chloe scenes), or 2 points for **Caroline** (to secure her route if you already met her)

⁴ Point for Jenna or **Caroline** if coming from Jules, another point for **Caroline** if following up her scene, choose Library for a necessary **Chloe** scene or see **Rachel** to secure her for next week if you've been following Sarah's sub-route. Caroline *after* Jules will not secure Caroline's route, though

⁵ Point for **Emma** or **Penny**, or a necessary scene to secure **Chloe's** route

⁶ Go to class slowly for **Sarah's** sub-route. Otherwise, a necessary scene for **Emma** or Madison point

⁷ Necessary scene for **Isabella's** route that won't be offered again, so take it here to continue her route

⁸ Point for **SluttyDemon** or **Malia**

⁹ If you're on the Sarah sub-route, **Rachel** has a necessary scene here. Otherwise no other scene here

¹⁰ Last chance scenes for **Emma** or **Caroline**

¹¹ Necessary scenes for **Jules** sub-route, **Chloe** or Madison. Jules's will not reoccur, but Chloe's will and Madison's ends on Day 14

¹² Non-necessary ero scene for **Sarah** sub-route. Otherwise, one of two necessary scenes for **Rachel** or an ero scene for Madison if you saw her previous necessary scene

¹³ Last chance necessary scenes for **Malia** or Madison. Otherwise, ero scenes for **Penny** or **Caroline**

Day 11	Day 12	Day 13	Day 14	
[4 possible] ¹	Workout ⁴	Soccer game ⁷	[3 possible] ¹⁰	
Check on Jules ²	[3 possible] ⁵	[3 possible] ⁸	Swimming Lesson ¹¹	
[3 possible] ³	Chloe/Malia ⁶	[3 possible] ⁹	Jules/Sarah ¹²	
			Don't Kill/Kill ¹³	

¹ Necessary scene for **Sarah** sub-route which can be pushed back, a last chance scene for **Rachel**, a necessary scene for **Chloe** which can be pushed back to day 12 or an ero scene for **Emma**

² Necessary scene for **Jules** sub-route. Otherwise, last chance for **Isabella's** necessary Day 10 scene

³ Last chance scene for **Chloe**, a necessary scene for **Malia** which can be pushed back or an ero **Zoey** scene

⁴ Non-necessary ero scene for **Isabella**, last chance scenes for **Sarah** or **Chloe**, necessary scene for **Caroline** which won't reoccur, or ero scenes for **Zoey** or **Rachel**

⁵ One of two necessary scenes for **Jules** sub-route or Emma, or a necessary scene for Madison which won't reoccur

⁶ Last chance for **Malia's** necessary Day 11 scene or a **Chloe** ero scene

⁷ One of two non-necessary ero scenes for **Isabella**. Otherwise, a non-necessary ero scene for **Sarah**, one of two **Jules** sub-route scenes or a last chance necessary scene for **Emma**

⁸ Non-necessary ero scenes for **Zoey**, **Rachel** or **Malia**. None of the scenes during this time repeat again

⁹ A necessary scene for **Emma** which won't reoccur. Otherwise, a last chance ero scene for **Chloe** or a non-necessary **Penny** ero scene

¹⁰ Necessary scenes for **Caroline**, **Chloe** or **Malia**. Needed to continue their routes into Week 3

¹¹ A necessary **Isabella** scene which won't reoccur. Needed to continue her route into Week 3. You need to have taken the CPR class on Day 8, as well

¹² Necessary scenes for **Jules** sub-route or **Sarah** sub-route. Needed to continue their routes into Week 3

¹³ Don't kill to keep the **Stranger's** route open for Week 3 (needs 7+ points). Otherwise, let her die



Jenna

Day 1	Day 2	Day 3	Day 4	Day 5
Give Zoey Pen ¹	Attend class ³	Sure/Sorry ⁶	Defend ⁹	[3 possible] ¹²
Ignore Caleb	[4 possible] ⁴	Tell him ⁷	[3 possible] ¹⁰	Eavesdrop/Don't ¹³
Check out club ²	[5 possible] ⁵	[4 possible] ⁸	[4 possible] ¹¹	Go to club/Don't ¹⁴
				Lie ¹⁵

¹ Point to start Jenna's **Zoey** sub-route. You can however, ignore her if you want to pursue Rachel as well as skip Ash's sub-route

² Point for **Ash**. Starts her route and necessary to later meet Jenna

³ Point for **Jules** or **Rachel**. Rachel is only really viable later if you ignored Zoey on Day 1

⁴ Point for **Zoey** sub-route **and Katy** or a point for **Ash**. Both sub-routes should be attainable by the end of the week. If you ignored Zoey, choose History for **Madison** or Science for **Trish**. If going for Rachel, avoid Trish

⁵ Choose Doom Metal for **Katy**, Take Blame for **Ash** sub-route, Library for **Rachel**, Home for **Sarah** or Research for **Trish**. Chloe is non-viable on this route

⁶ Point for **Penny** or **Zoey** sub-route. Both routes are active at end of Week 1 regardless

⁷ Choose to tell Joey to earn **Jenna's** second point. Otherwise, it can be sacrificed for a **Sarah** point. Jenna will need at least 3 points at the end of Week 1 in order to secure her route

⁸ Choose a point for **Katy**, Pizza for **Emma**, Macarons for **Madison** or Explore Downtown for **Jules**. If going for Rachel's route, it's recommended to avoid Emma here. It's important to keep Madison's points below Jenna's, as well

⁹ Point for **Jenna**. Choose Bully for **Jules**, if you don't want max points with Jenna

¹⁰ Choose dorms for **Rachel**, science lab for **Trish** or a point for **Penny**. Rachel leads to Katy and Sarah. Penny leads to Malia. Trish leads to Emma

¹¹ Choose Zombie movie for **Katy**, Classic movie for **Sarah**, Chaos for **Emma**, or a point for **Malia** if you saw Penny

¹² Choose Sit Down for **Penny**. Malia, Chloe and Caroline are all non-viable on Jenna's route

¹³ Choose to eavesdrop for a necessary **Madison** scene or don't for an **Emma** point

¹⁴ Choose Ero-games club for **Ash's** sub-route, or Something Else for **Sarah**

¹⁵ Choose to Lie for **Jules** here. You needed to be invited to her house on Day 7 to secure Jenna's route

Day 6	Day 7	Day 8	Day 9	Day 10
Help her ¹	Visit Jules ⁴	[4 possible] ⁷	Jenna meet Zoey ¹⁰	[3 possible] ¹³
Movies/Sarah ²	Cross street ⁵	Ero-games club ⁸	[3 possible] ¹¹	Check on Jenna ¹⁴
Decline/Watch ³	Penny/Emma ⁶	Katy/Camgirls ⁹	Jules/Downtown ¹²	Malia/Penny ¹⁵

¹ Point for **Penny**. Malia is non-viable on this route

² Choose Movies for **Ash's** sub-route or a point for **Sarah**

³ Don't go to Bob's Corner or say hello to **Jenna** for her point. Otherwise, it can be sacrificed to secure **Katy's** or **Trish's** route here, if either of them has 3 points

⁴ You need to visit **Jules** here. It leads into a necessary scene for Jenna's route

⁵ This scene is required along with at least 3 total points for **Jenna's** route

⁶ A point for **Penny** or **Emma**

⁷ Necessary scenes for **Emma** or **Sarah** that can be pushed back. Otherwise, a point for **Trish** or **Madison**

⁸ Necessary scene for **Jenna**, but can be pushed back later for a **Penny** point instead. However, if you want to keep Jenna's Zoey sub-route open, you need to see Jenna here

⁹ Non-necessary ero scenes for **Katy** or **SluttyDemon**

¹⁰ A non-necessary scene for **Jenna** (which is required to keep her Zoey sub-route open) or last chance for Jenna's previous necessary scene. Otherwise a necessary scene for **Rachel** or a point for **Katy**

¹¹ Non-necessary ero scene for **Ash's** sub-route, a necessary scene for **Trish** or ero scene for **Emma**

¹² Necessary scenes for **Jules** or **Madison**. Jules's will not reoccur, but Madison's will

¹³ One of two necessary scenes for **Rachel** or ero scenes for **Madison** or **Sarah**

¹⁴ Non-necessary ero scene for **Jenna** which won't reoccur, a necessary scene for **Ash's** sub-route which can be pushed back or one of two **Trish** scenes. In order to stay on Ash's sub-route, either this Jenna ero scene or her Day 11 scene need to be sacrificed. Day 10 is a shower, Day 11 is a lesbian scene

¹⁵ Last chance for **Madison's** necessary scene or a **Penny** ero scene

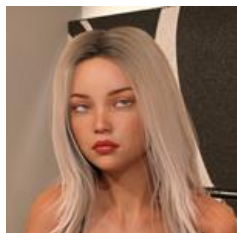
Day 11	Day 12	Day 13	Day 14	
[3 possible] ¹	[3 possible] ⁴	[3 possible] ⁷	Arcade w/ Ash ¹⁰	
Offer to drop it off ²	[4 possible] ⁵	Movie with Jenna ⁸	Madison/Rachel ¹¹	
[3 possible] ³	Katy/Trish ⁶	[3 possible] ⁹	[3 possible] ¹²	
			Don't Kill/Kill ¹³	

¹ Necessary scene for **Sarah** which can be pushed back, a last chance scene for **Rachel** or **Emma** ero scene

² Non-necessary ero scene for **Jenna** featuring Ash that won't reoccur, one of two **Ash** sub-route scenes, or a necessary scene for **Jules** which can be pushed back. If you haven't learned Ash's secret yet, this is the last chance to stay on her route. It's recommended to take Jenna's scene here, even if on Ash route

³ Non-necessary ero scenes for **Zoey** sub-route or **Katy**

- ⁴ Non-necessary ero scene for **Zoey** sub-route, ero scene for **Rachel** or last chance scene for **Sarah**
- ⁵ One of two **Ash** sub-route ero scenes, a necessary **Madison** scene which won't reoccur, or one of two necessary **Emma** or **Jules** scenes
- ⁶ Necessary scenes for **Katy** or **Trish** which won't reoccur
- ⁷ Last chance necessary scene for **Jules** or a non-necessary ero scene for her, a last chance scene for **Emma** or a **Sarah** ero scene
- ⁸ A necessary ero scene for **Jenna's** route which does not reoccur. You need to go to the movie with her and then kiss her in order to keep her route open
- ⁹ A necessary scene for **Trish** or **Emma** which won't reoccur or a non-necessary ero scene for **Penny**
- ¹⁰ Necessary scene for **Ash** sub-route. Needed to continue her route into Week 3
- ¹¹ Necessary scenes for **Madison** or **Rachel**. Needed to continue their routes into Week 3
- ¹² Necessary scenes for **Katy**, **Jules** or **Sarah**. Needed to continue their routes into Week 3
- ¹³ Don't kill to keep the **Stranger's** route open for Week 3 (needs 7+ points). Otherwise, let her die



Jules

Day 1	Day 2	Day 3	Day 4	Day 5
Give Zoey Pen ¹	Art class ⁴	Sure/Sorry ⁷	Bully ¹⁰	[4 possible] ¹³
Punch/Ignore ²	[5 possible] ⁵	[5 possible] ⁸	[3 possible] ¹¹	Eavesdrop/Leave ¹⁴
[4 possible] ³	[6 possible] ⁶	Explore Downtown ⁹	[4 possible] ¹²	Lie
				Don't look ¹⁵

- ¹ You can choose to *not* give **Zoey** the pen here as long as you avoid History Tutoring on Day 2 (Madison). In order to get max points with Jules, you can't meet Madison before Day 4
- ² Ignore Caleb for full Jules points or punch him to begin the **Isabella** sub-route later
- ³ Go to the club for an **Ash** point, decline Joey to begin the **Isabella** sub-route. If you punched, then apologize for a **Caroline** point or don't for **Holmes**
- ⁴ Go to the art class to meet **Jules**, skip class for **Rachel**, text back to start **Emma's** sub-route or ignore it for **Malia**. Emma's sub-route only needs 3 points by the end of Week 1
- ⁵ Go with **Zoey** for hers and Katy's points, go to the club for **Ash** or leave school for **Isabella's** sub-route. If ignored Zoey, study science to meet **Trish**. It isn't recommended to study history (**Madison**) if you're trying for max Jules points. Also at the end of Week 2, Katy's route becomes non-viable with Jules
- ⁶ Choose Doom Metal for Katy, Camgirls for **SluttyDemon**, Research for **Trish**, Take the Blame for **Ash**, Act Offended for **Chloe** sub-route, Sharks for **Isabella** sub-route, Reapers for Sarah. First chance to start Chloe sub-route. Both Katy and Sarah's routes are non-viable
- ⁷ Point for **Penny** or **Zoey**. Both routes are active at end of Week 1 regardless
- ⁸ Choose Tell Him for **Jenna**, Don't Tell him for Sarah, Leave school for **Isabella** sub-route, Explore for **Rachel**, He Started It for **Trish** or I Started It for **Holmes**

⁹ Go downtown for **Jules** point. Otherwise, choose Pizza for **Emma** sub-route, Macarons for **Madison** or a visit Katy

¹⁰ A point for **Jules** that can be sacrificed for **Jenna's** or **Madison's** route (Defend) if you're not going for max Jules points or attempting Chloe sub-route

¹¹ Dorm for **Rachel** (later Katy/Sarah), Lab for **Trish** (later Chloe's or Emma's sub-route), Neither for **Penny** (later Malia)

¹² Choose Order for **Chloe's** sub-route, Chaos for **Emma's** sub-route, Zombie movie for Katy, Classic movie for Sarah, Dean Blakeman for **Malia** or a point for **Caroline**

¹³ Choose Watch Video for **Chloe's** sub-route, Sit Down for **Penny**, Office for **Caroline**, Think About It for **Malia**

¹⁴ Choose Eavesdrop for a necessary **Madison** point or don't for **Emma's** sub-route

¹⁵ Don't look at her photos for a more favorable outcome later on Jules's route

Day 6	Day 7	Day 8	Day 9	Day 10
Help her/Answer ¹	Visit Jules ⁴	[3 possible] ⁷	[3 possible] ¹⁰	[2 possible] ¹⁴
Movies/Restaurant ²	[4 possible] ⁵	[4 possible] ⁸	[4 possible] ¹¹	[4 possible] ¹⁵
[4 possible] ³	[3 possible] ⁶	[2 possible] ⁹	Visit Jules ¹²	[4 possible] ¹⁶
			Accept ¹³	

¹ Point for **Penny** or **Malia**. Choose Malia if you want to keep Chloe's sub-route open (you'll regain the lost Jules point later in the game). Choose Help Her if you want to keep Caroline's route open

² Choose Movies for **Ash**, Stay with Sarah or the restaurant for **Madison**

³ Choose to go to Bob's Corner to secure Katy or **Isabella's** sub-route. Choose Just Watch for a **Jenna** point. Say Hello and then go left for **Trish** or go right for **Holmes**

⁴ Point for **Jules** which leads into a required Jenna scene, or a necessary **Malia** point which leads into required 2 Chloe scenes, or 2 back-to-back points for **Caroline**

⁵ Cross Street to secure **Jenna's** route, Listen to secure **Chloe** sub-route, otherwise points for **Rachel** or **Caroline**

⁶ A point for **Penny**, **Emma** sub-route or **Chloe** sub-route. Chloe's point here is necessary to secure her route

⁷ Necessary scenes for Sarah or **Emma** sub-route which can be pushed back later. Otherwise, points for **Trish** or **Madison**

⁸ A necessary scene for **Isabella's** sub-route which won't reoccur. Otherwise, a necessary scene for **Jenna** which can be pushed back or ero scenes for **Penny** or **Caroline**

⁹ Necessary scene for **Malia** which can be pushed be later. Otherwise points for Katy or **SluttyDemon**

¹⁰ Necessary scenes for **Rachel** and **Holmes** which can be pushed back later. Otherwise, points for **Jenna** or Katy

¹¹ One of two **Emma** sub-route scenes, one of two **Caroline** scenes, a necessary scene for **Trish** which can be pushed back or an **Ash** ero scene

¹² Necessary scene for **Jules** that won't reoccur, so it needs to be taken here.

¹³ To activate the **Chloe** sub-route, you need to go to the mansion here and agree to Jules's plan

¹⁴ One of two necessary scenes for **Rachel** or last chance scenes for Sarah or **Holmes**

¹⁵ A necessary scene for **Isabella's** sub-route which can be pushed back later. Otherwise, one of two **Trish** scenes, a necessary scene for **Ash** or a **Jenna** ero scene

¹⁶ Last chance necessary scene for **Madison**, one of two **Malia** scenes or an ero scene for **Penny**, **Caroline** or **Holmes**

Day 11	Day 12	Day 13	Day 14	
Emma/Rachel ¹	[5 possible] ⁴	Jules Date ⁷	[4 possible] ¹⁰	
Check on Jules ²	Visit Jules ⁵	[4 possible] ⁸	[4 possible] ¹¹	
[3 possible] ³	[4 possible] ⁶	[5 possible] ⁹	Tell Jules truth ¹²	
			Don't Kill/Kill ¹³	

¹ An ero scene for **Emma's** sub-route, a last chance scene for **Rachel** or a necessary scene for Sarah

² Necessary scene for **Jules** that can be pushed back to Day 12. Otherwise, a last chance for **Isabella's** scene or a point for **Jenna** or **Ash**. If you haven't learned Ash's secret yet, this is the last chance to stay on her route

³ Last chance for **Chloe's** sub-route necessary Day 9 scene. Otherwise, a necessary ero scene for **Malia** or ero scenes for **Zoey** or **Katy**

⁴ Another last chance scene for **Chloe's** sub-route or a non-necessary ero scene for **Isabella's** sub-route. Otherwise, last chance scenes for Sarah or **Caroline**, or ero scene for **Zoey** or **Rachel**

⁵ One of two necessary **Jules** scenes, one of two necessary scenes for **Emma's** sub-route, a necessary scene for **Madison** which won't reoccur or one of two **Ash** ero scenes

⁶ An ero scene for **Chloe's** sub-route, a necessary scene for **Holmes** which can be pushed back, a last chance scene for **Malia** or necessary non-reoccurring scenes for **Katy** or **Trish**

⁷ Last chance necessary scene for **Jules** or a non-necessary ero scene for her. Otherwise, one of two non-necessary ero scenes for **Isabella's** sub-route, a last chance scene for **Emma's** sub-route or a Sarah ero scene

⁸ A necessary ero scene for **Jenna**. Otherwise, non-necessary ero scenes for **Zoey**, **Rachel** or **Malia**. None of the scenes during this time repeat again

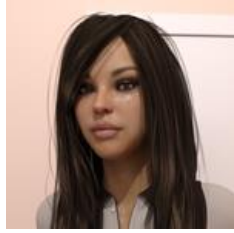
⁹ A necessary scene for **Emma's** sub-route which won't reoccur. Otherwise, a last chance non-necessary ero scene for **Chloe's** sub-route, one of two scenes for **Holmes**, a necessary scene for **Trish** which won't reoccur or a non-necessary ero scene for **Penny**

¹⁰ Necessary scenes for **Chloe** sub-route or **Ash**, **Malia** or **Caroline**. Needed to continue their routes into Week 3

¹¹ Necessary scenes for **Isabella** sub-route or **Holmes**, **Rachel** or **Madison**. Needed to continue their routes into Week 3

¹² A necessary **Jules** scene which won't reoccur. Needed to continue her route into Week 3

¹³ Don't kill to keep the **Stranger's** route open for Week 3 (needs 7+ points). Otherwise, let her die



Katy

Day 1	Day 2	Day 3	Day 4	Day 5
Give Zoey Pen ¹	[3 possible] ⁴	Sure/Sorry ⁶	Defend/Bully ⁹	[4 possible] ¹²
Punch/Ignore ²	Check out city	Tell Him/Explore ⁷	Rachel's Dorm ¹⁰	Eavesdrop/Leave ¹³
[3 possible] ³	Doom Metal ⁵	Visit Katy ⁸	Zombie movie ¹¹	Lie ¹⁴

¹ Necessary to start Katy's route, but also begins her **Zoey** sub-route

² Ignoring Caleb here is usually the better option because it opens up Rachel's sub-route, while punching benefits Holmes and Trish routes (both of which are non-viable with Katy's)

³ Although if you decline the club invite you earn a point for Isabella (who is non-viable) it will start you on the path towards Rachel's sub-route. If you go to the club, you earn a point for **Ash** (barely viable). If you apologize, it's a point for **Caroline**. Holmes's route is non-viable because it conflicts later with Katy's

⁴ Skip art class to start **Rachel** sub-route. Rachel's point need to be higher than Trish, Emma's and Chloe by Day 4. Respond to text for **Emma** or ignore it for **Malia**. Go to art class for Jules, however she becomes non-viable at the end of Week 2. Also, avoid Emma here if going for max Katy points

⁵ Choose Doom Metal for **Katy**. Otherwise it's a point for **SluttyDemon**

⁶ Point for **Penny** or **Zoey** sub-route. Both routes are active at end of Week 1 regardless

⁷ Choose Tell Him for **Jenna** or explore the school for **Rachel** sub-route. Both Isabella and Sarah's routes become non-viable with Katy's

⁸ One of two points that can be sacrificed for **Katy**. Choose Macarons for **Madison** or Pizza for **Emma**. Jules becomes non-viable at the end of Week 2. Once again, try to keep Emma's points lower than Rachel's in order to get Katy's Day 5 scene

⁹ Point for **Jenna**, **Madison** or Jules. Also choose Defend if you want to start Chloe's route or a point for Penny. Choose Bully to start either Malia or Caroline's route

¹⁰ Go to **Rachel's** dorm for her sub-route and later a Katy point. Don't for a **Penny** point. If Emma has the same or more points than Rachel you may go to the science lab for Trish (who is non-viable)

¹¹ Choose Zombie Movie for **Katy**. Sarah's route is non-viable. Otherwise, choose Dean Blakeman for **Malia**, Chaos for **Emma** or Order for **Chloe**

¹² Choose Watch Video for **Chloe**, Sit Down for **Penny**, Office for **Caroline**, Think About It for **Malia**

¹³ Choose eavesdrop for a necessary **Madison** scene. Otherwise, a point for **Emma**

¹⁴ Holmes becomes non-viable at the end of Week 1 and Jules becomes non-viable at the end of Week 2. However, choosing Lie for Jules here is necessary to keep Jenna's route open on Day 7

Day 6	Day 7	Day 8	Day 9	Day 10
Help her/Answer ¹	[3 possible] ⁴	Hurry/Trail Emma ⁷	Find Katy ¹⁰	Rachel/Madison ¹³
Movies/Restaurant ²	[4 possible] ⁵	[3 possible] ⁸	Ash/Caroline ¹¹	Jenna/Ash ¹⁴
Bob's Corner ³	[3 possible] ⁶	Visit Katy at work ⁹	Chloe/Downtown ¹²	[4 possible] ¹⁵

¹ Point for **Penny** or **Malia**. Choose Malia if you want to keep Chloe's route open. Choose Help Her if you want to keep Caroline's route open

- ² Choose Movies for **Ash** or Restaurant for **Madison**. **Sarah** is non-viable at the end of Week 2
- ³ A required scene to secure Katy's route. This cuts off Isabella's, Trish's and Holmes's routes
- ⁴ Point for Jules which leads into a required Jenna scene, or a necessary **Malia** point which leads into required 2 Chloe scenes, or 2 back-to-back points for **Caroline**
- ⁵ Choose Walk Across Street to secure **Jenna's** route, choose to listen to **Chloe** to secure her route, otherwise points for **Rachel** sub-route or **Caroline**
- ⁶ A point for **Emma, Penny** or **Chloe**. Chloe's point here is necessary to secure her route
- ⁷ A necessary scene for **Emma** which can be pushed back. Otherwise, a point for **Madison** if you hurry to class. Sarah becomes non-viable on Day 14
- ⁸ Necessary scene for **Jenna** which can be pushed back. Otherwise, ero scenes for **Penny** or **Caroline**
- ⁹ A point for **Katy** that can be sacrificed for a necessary **Malia** scene or **SluttyDemon** ero scene. Katy needs 5+ points before Day 12
- ¹⁰ A point for **Katy** that can be sacrificed for **Rachel** sub-route or **Jenna**. Rachel's scene is necessary but can be pushed back
- ¹¹ Last chance (or ero) scenes for **Emma** or **Caroline**. Otherwise, an ero scene for **Ash**
- ¹² Necessary scenes that can be pushed back for **Madison** or **Chloe**. Jules will be non-viable on Day 14
- ¹³ One of two necessary scenes for **Rachel** sub-route. Otherwise, **Madison** ero scene if you went to BSC
- ¹⁴ Necessary scene for **Ash** which can be pushed back or an ero scene for **Jenna**
- ¹⁵ Last chance scenes for **Malia** or **Madison**. Otherwise, ero scenes for **Penny** or **Caroline**

Day 11	Day 12	Day 13	Day 14	
[3 possible] ¹	[4 possible] ⁴	Emma*	[4 possible] ⁹	
Ash/Jenna ²	[3 possible] ⁵	[4 possible] ⁷	Rachel/Madison ¹⁰	
Visit Katy ³	Visit Katy ⁶	[3 possible] ⁸	Katy Ritual ¹¹	
			Don't Kill/Kill ¹²	

- ¹ Last chance necessary scene for **Rachel** sub-route, a necessary scene for **Chloe** which can be pushed back or an ero scene for **Emma**
- ² One of two necessary scenes for **Ash** or Jenna **ero** scene
- ³ Non-necessary eros scene for **Katy** and **Zoey** sub-route that won't reoccur. Otherwise, last chance scene to see **Chloe's** necessary Day 9 scene or a necessary scene for **Malia** which can be pushed back
- ⁴ Non-necessary ero scenes for both **Zoey** sub-route and **Rachel** sub-route. Otherwise, last chance necessary scenes for **Caroline** or **Chloe**
- ⁵ One of two necessary scenes for **Emma**, a necessary scene for **Madison** which won't reoccur or one of two ero scenes for **Ash**
- ⁶ A necessary scene for **Katy** which won't reoccur. Take it here in order to continue her route
- ⁷ Non-necessary ero scenes for **Zoey** sub-route or **Rachel** sub-route. Otherwise, a necessary ero scene for **Jenna** or a non-necessary ero scene for **Malia**. None of the scenes during this time repeat again
- ⁸ A necessary scene for **Emma** which won't reoccur, a last chance non-necessary ero scene for **Chloe** or a non-necessary ero scene for **Penny**
- ⁹ Necessary scenes for **Ash, Chloe, Malia** or **Caroline**. Needed to continue their routes into Week 3
- ¹⁰ Necessary scenes for **Rachel** sub-route or **Madison**. Needed to continue their routes into Week 3
- ¹¹ A necessary **Katy** scene which won't reoccur. Needed to continue her route into Week 3

¹² Don't kill to keep the **Stranger's** route open for Week 3 (needs 7+ points). Otherwise, let her die. Katy's route changes slightly depending on if the Stranger is alive in Week 3 or not



Madison

Day 1	Day 2	Day 3	Day 4	Day 5
Ignore Zoey ¹	[3 possible] ⁴	Sure/Sorry ⁶	Defend ⁹	[4 possible] ¹²
Ignore/Punch ²	Study History	[3 possible] ⁷	Science Lab/Don't ¹⁰	Eavesdrop ¹³
[3 possible] ³	Go home ⁵	Macarons ⁸	[4 possible] ¹¹	Lie ¹⁴

¹ The requirements for securing Madison for Week 2 are 3+ points including her Day 5 scene. It is possible to meet her on Day 4 and still secure her route, but the margin for error is much slimmer. So this guide will focus on a max points run for Madison or her shared sub-routes. This starts with ignoring Zoey

² If going for Trish or Emma's sub-routes, it's recommended to punch Caleb. Otherwise, player's choice

³ Choose Check Out Club for **Ash**, Decline for **Isabella**, or Apologize for **Caroline**. Don't backtalk here as Holmes becomes non-viable at the end of Week 2

⁴ Choose Art Class for **Jules**, Text back for **Emma** sub-route or Ignore text for **Malia**. It's recommended to avoid Rachel here since her route becomes non-viable at the end of Week 2 *and* interferes with all of Madison's sub-routes, too

⁵ Choose not to go to the library for **Sarah**. Rachel is non-viable later on

⁶ Point for **Penny** or **Zoey**. Both routes are active at end of Week 1 regardless

⁷ Choose He started It for **Trish** sub-route, Tell Him for **Jenna** or Don't Tell Him for **Sarah**. Holmes, Isabella and Rachell all become non-viable later on

⁸ Choose Macarons for **Madison** or Pizza for **Emma** sub-route. This Madison point is the least impactful for Week 1 if you want to see Emma's ero scene instead, or if you want to be on both Emma's *and* Chloe's sub-routes for Madison, you need to take Emma's point here

⁹ A point for **Madison**, but can be sacrificed to give to **Jules** (which leads into a point for Malia/Caroline). However, if you wish to follow the Chloe sub-route, you should probably defend Madison here

¹⁰ Choose Science Lab for **Trish** sub-route (later Chloe/Emma), Neither for **Penny** (later Malia/Caroline). Going to the lab is recommended as it earns points for multiple sub-routes

¹¹ Choose Dean Blakeman for **Malia**, Assistant Dean for **Caroline**, Order for **Chloe** sub-route, Chaos for **Emma** sub-route. To follow Emma's *and* Chloe's sub-routes, choose Emma here to secure hers

¹² Choose Watch Video for **Chloe** sub-route, Sit Down for **Penny**, Office for **Caroline**, Think About It for **Malia**. If you want to follow Emma's *and* Chloe's sub-routes, choose Chloe here

¹³ A necessary scene for **Madison** to secure her route into Week 2. Costs Emma a point as a result of it

¹⁴ Choose Lie for a necessary **Jules** point. Holmes is non-viable later

Day 6	Day 7	Day 8	Day 9	Day 10
Help Her/Answer ¹	[3 possible] ⁴	Hurry to Class ⁷	Jenna/Holmes ¹⁰	Talk with Madison ¹³
Restaurant ²	[3 possible] ⁵	[3 possible] ⁸	[4 possible] ¹¹	[3 possible] ¹⁴
Say Hello/Watch ³	[3 possible] ⁶	Malia/SluttyDemon ⁹	Side streets ¹²	[4 possible] ¹⁵

¹ Point for **Penny** or **Malia**. Choose Malia if you want to keep Chloe's sub-route open. Choose Help Her if you want to keep Caroline's route open

² Choose Restaurant for a **Madison** point. Otherwise, choose Movies for **Ash** or a point for **Sarah**

³ Choose Say Hello to secure **Trish's** sub-route or Just Watch for a **Jenna** point. Normally, Trish needs 3 points in order for this scene to be offered, but if Madison's route has been secured by now (3+ points and eavesdropped), then Trish only needs 2 points to be found at the subway station

⁴ Point for **Jules** which leads into a required Jenna scene, or a necessary **Malia** point which leads into required 2 Chloe sub-route scenes, or 2 back-to-back points for **Caroline**

⁵ Choose Walk Across Street to secure **Jenna's** route, Choose to listen to **Chloe** to begin to secure her sub-route. Otherwise it's Caroline's other back-to-back point

⁶ A point for **Penny**, **Emma** sub-route or **Chloe** sub-route. Chloe's point here is necessary to secure her route.

⁷ A non-necessary scene for **Madison** that won't reoccur. Otherwise, a necessary scene for **Sarah** or **Emma** sub-route which can be pushed back, or a non-necessary non-reoccurring **Trish** sub-route scene. If you want to follow Emma and Trish's sub-routes, it's probably recommended to trail Emma here

⁸ A necessary scene for **Jenna** which can be pushed back. Otherwise, ero scenes for **Penny** or **Caroline**

⁹ A necessary scene for **Malia** which can be pushed back. Otherwise a **SluttyDemon** ero scene

¹⁰ One of two scenes for **Jenna**. A necessary scene for **Holmes** is also possible, though she is non-viable

¹¹ Last chance scene for **Emma** sub-route, a necessary scene which can be pushed back for **Trish** sub-route, a last chance for **Caroline** or an ero scene for **Ash** if you ignored Zoey on Day 1 and did her route. If you wish to follow Emma and Trish's sub-routes and already trailed Emma, pick Trish here

¹² A necessary point for **Madison** or **Chloe** sub-route, but both can be pushed back later if you want a necessary **Jules** scene which won't reoccur instead of Chloe. If you don't mind ending Jules route here, go downtown now so you don't miss a Madison ero scene on Day 10, then get Chloe's scene Day 11

¹³ A non-necessary, non-reoccurring ero scene for **Madison** if you went downtown on Day 9. Otherwise, one of two necessary scenes for **Holmes** or a **Sarah** ero scene

¹⁴ Last chance scene for **Trish** sub-route. Otherwise, a necessary scene for **Ash** or **Jenna** ero scene

¹⁵ Last chance for **Madison's** scene, last chance scene for **Malia** or ero scenes for **Penny** or **Caroline**

Day 11	Day 12	Day 13	Day 14	
[3 possible] ¹	[4 possible] ⁴	[3 possible] ⁷	[4 possible] ¹⁰	
[3 possible] ²	Follow him ⁵	[3 possible] ⁸	Find Madison ¹¹	
[3 possible] ³	[4 possible] ⁶	[4 possible] ⁹	Jules/Sarah ¹²	
			Don't Kill/Kill ¹³	

¹ A necessary scene for **Chloe** sub-route which can be pushed back later, an ero scene for **Emma** sub-route or a necessary scene for **Sarah** which can be pushed back later. In order you keep Emma's sub-route open, you need to see either this scene or her classroom scene. Chloe's re-occurs on Day 12

² A necessary scene for **Jules** which can be pushed back later, one of two necessary scenes for **Ash**, or an ero scene for **Jenna**

³ Last chance for **Chloe** sub-route's Day 9 scene. Otherwise, a necessary scene for **Malia** which can be pushed back or a **Zoey** ero scene

⁴ Last chance for **Chloe** sub-route's Day 11 scene. Otherwise, last chance scenes for **Caroline** and **Sarah**, or an ero scene for **Zoey**

⁵ A necessary scene for **Madison** which won't reoccur. **Emma** has a necessary scene here, but it reoccurs on Day 13 (and needs to be taken then for her sub-route)

⁶ A necessary scene for **Trish** sub-route which won't reoccur (take it now to keep it open). Otherwise, an ero scene for **Chloe** sub-route, a last chance scene for **Malia** or a necessary scene which can be pushed back for **Holmes**

⁷ Last chance necessary scene for **Emma's** sub-route. Otherwise, one of two scenes for **Jules** or a **Sarah** ero scene

⁸ A necessary ero scene for **Jenna** or non-necessary ero scenes for **Zoey** or **Malia**. None of the scenes during this time repeat again

⁹ Necessary scenes for **Emma's** sub-route and **Trish's** sub-route which won't reoccur, or a last chance non-necessary ero scene for **Chloe's** sub-route. Otherwise, a non-necessary ero scene for **Penny**

¹⁰ Necessary scenes for **Chloe** sub-route or **Ash**, **Malia** or **Caroline**. Needed to continue their routes into Week 3

¹¹ A necessary **Madison** scene which won't reoccur. Needed to continue her route into Week 3

¹² Necessary scenes for **Jules** or **Sarah**. Needed to continue their routes into Week 3

¹³ Don't kill to keep the **Stranger's** route open for Week 3 (needs 7+ points). Otherwise, let her die



Malia

Day 1	Day 2	Day 3	Day 4	Day 5
Ignore Zoey ¹	Ignore Text ⁴	Sure/Sorry ⁷	Bully ¹⁰	Think about it ¹³
Punch Caleb ²	History/Science ⁵	He started it/I did ⁸	Don't visit ¹¹	Eavesdrop/Leave ¹⁴
[3 possible] ³	[8 possible] ⁶	[4 possible] ⁹	Dean Blakeman ¹²	Lie/Give info ¹⁵

¹ This choice doesn't affect Malia's point much, but does help with her Trish sub-route

² Punching Caleb here not only allows for max Malia points, but leads to her Trish or Holmes sub-routes

³ Choose "Do what I want" for **Holmes** sub-route. If you ignored Caleb, you can go to the club for **Ash** or not for **Isabella**. Caroline's route requires sacrificing 2 Malia points to secure

⁴ The requirement to secure **Malia** for Week 2 is 3+ points including her Day 7 scene. This point can be sacrificed for **Emma** instead. If you didn't punch Caleb, go to art class for **Jules** or don't for **Rachel**

⁵ Choose Science for **Trish** sub-route or History for **Madison**. Otherwise it's a point for **Zoey and Katy**, **Ash** or **Isabella**

⁶ Choose Research for **Trish** sub-route, Doom Metal for **Katy**, Camgirls for **SluttyDemon**, Take the Blame for **Ash**, Act Offended for **Chloe**, Sharks for **Isabella**, Reapers or no library for **Sarah**, or Library for **Rachel**

⁷ Point for **Penny** or **Zoey**. Both routes are active at end of Week 1 regardless

⁸ Choose “He started it” for **Trish** sub-route or “I started it” for **Holmes** sub-route. These sub-routes are mutually exclusive so you can only pick one. If you didn’t punch Caleb, choose “Don’t Tell Him” for **Sarah**, leave the school for **Isabella** or explore it for **Rachel**. Jenna is non-viable on Malia’s route

⁹ Choose Downtown for **Jules**, Pizza for **Emma**, Macarons for **Madison** or visit **Katy**

¹⁰ Choose Bully for **Jules** and later a point for Malia. Otherwise, Defend for **Madison** (later Chloe or Penny). Jenna is non-viable

¹¹ Choose not to go to the dorms or science lab for a **Penny** point which later leads into Malia. If you’re willing to sacrifice that point, then go to the lab for **Trish** sub-route, or the dorms for **Rachel**

¹² If you saw Penny, choose Blakeman for **Malia’s** point. Otherwise, choose Zombie movie for **Katy**, Classic movie for **Sarah**, Order for **Chloe**, Chaos for **Emma** or meet with **Caroline**

¹³ If you bullied, then “Think about it” for **Malia’s** point. Otherwise, Watch Video for **Chloe**, Sit Down for **Penny** or meet with **Caroline**

¹⁴ Choose Eavesdrop for a necessary **Madison** scene or a point for **Emma** otherwise

¹⁵ Give information for **Holmes** sub-route. Otherwise, lie for **Jules** here to keep her route open

Day 6	Day 7	Day 8	Day 9	Day 10
Answer her call ¹	Meet up with Malia	[3 possible] ⁷	Ask about Florist ¹⁰	[4 possible] ¹³
Restaurant ²	Rachel/Library ⁵	[3 possible] ⁸	[3 possible] ¹¹	[3 possible] ¹⁴
Say hello ³	[3 possible] ⁶	Fast food Malia ⁹	[3 possible] ¹²	Spy lessons ¹⁵
Go left/Right ⁴				

¹ Answer **Malia’s** call for a point. Otherwise, a point for **Penny**

² Choose Restaurant for a **Madison** point. Ash or Sarah may be offered here if you didn’t punch Caleb

³ Choose Say Hello if on Trish or Holmes sub-route. Jenna’s route is non-viable, but Just Watch includes an ero scene. Otherwise, a chance to secure **Katy** or **Isabella’s** route here

⁴ Choose to go left to secure **Trish’s** sub-route or go right for **Holmes** sub-route

⁵ If you met with Malia earlier (necessary for her route), choose Library for **Chloe** or spy on **Rachel**

⁶ Point for **Emma**, **Penny** or **Chloe**. Chloe’s point is necessary to secure her route

⁷ Non-necessary scene for **Trish** sub-route or **Madison**, as well as necessary scenes for **Emma** or **Sarah** which can be pushed back

⁸ Necessary scene for **Isabella** which won’t reoccur. Otherwise, ero scenes for **Caroline** or **Penny**

⁹ Necessary scene for **Malia** which can be pushed back. However, if you don’t take it here, you miss an ero scene with her on Day 10. Otherwise, ero scenes for **Katy** or **SluttyDemon**

¹⁰ Necessary scene for **Holmes** sub-route which can be pushed back. Otherwise, a necessary scene for **Rachel** which can be pushed back or a point for **Katy**

¹¹ Necessary scene for **Trish** sub-route which can be pushed back. Otherwise, one of two scenes for **Emma** or **Caroline** or an **Ash** ero scene

¹² Necessary scene for **Jules** which won’t reoccur, or necessary scenes for **Madison** or **Chloe** which do

¹³ Last chance scene for **Holmes** sub-route. Otherwise, one of two necessary scenes for **Rachel**, last chance scene for Sarah or an ero scene for **Madison**

¹⁴ Last chance scene for **Trish** sub-route. Otherwise, necessary scenes for **Ash** or **Isabella** which can be pushed back or a **Jenna** ero scene

¹⁵ Last chance necessary scene for **Malia** or an ero scene if you've already scene in. There's also a **Holmes** sub-route ero scene here. Otherwise, last chance scene for **Madison** or ero scenes for **Penny** or **Caroline**

Day 11	Day 12	Day 13	Day 14	
[4 possible] ¹	[6 possible] ⁴	[4 possible] ⁷	Find Malia ¹⁰	
[3 possible] ²	[4 possible] ⁵	Movie with Malia ⁸	[4 possible] ¹¹	
Visit Malia's ³	[5 possible] ⁶	[5 possible] ⁹	[3 possible] ¹²	
			Don't Kill/Kill ¹³	

¹ Last chance scene for **Rachel**, necessary scenes for **Sarah** or **Chloe** which can be pushed back, or a an **Emma** ero scene

² One of two necessary Ash scenes, a last chance Isabella scene or a necessary scene for Jules which can be pushed back

³ Necessary scene for **Malia** that can be pushed back. Otherwise, last chance scene for **Chloe** or an ero scene for **Zoey** or **Katy**

⁴ Last chance scenes for **Chloe**, **Sarah** or **Caroline**. Otherwise, ero scenes for **Zoey**, **Rachel** or **Isabella**

⁵ One of two necessary scenes for **Emma** or **Jules**, a necessary scene for **Madison** which won't reoccur, or one of two ero scenes for **Ash**

⁶ Last chance for **Malia's** Day 11 scene. Otherwise, a necessary **Trish** sub-route scene which won't reoccur, a necessary **Holmes** sub-route scene which will reoccur, a necessary **Katy** scene (non-occurring) or a **Chloe** ero scene

⁷ Last chance necessary scene for **Jules** or a non-necessary ero scene for her, one of two non-necessary ero scenes for **Isabella**, a last chance scene for **Emma** or a **Sarah** ero scene

⁸ A non-necessary ero scene for **Malia**. Otherwise, a necessary ero scene for **Jenna** or a non-necessary ero scenes for **Zoey** or **Rachel**. None of the scenes during this time repeat again

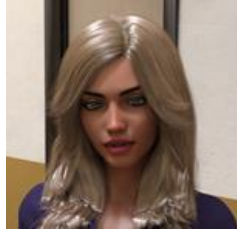
⁹ A necessary scene for **Trish's** sub-route which won't reoccur or one of two **Holmes** sub-route ero scene. Otherwise, a necessary **Emma** scene which won't reoccur, a last chance non-necessary ero scene for **Chloe** or a non-necessary ero scene for **Penny**

¹⁰ A necessary **Malia** scene which won't reoccur. Needed to continue her route into Week 3

¹¹ Necessary scenes for **Holmes** sub-route or **Isabella**, **Madison** or **Rachel**. Needed to continue their routes into Week 3

¹² Necessary scenes for **Jules**, **Katy** or **Sarah**. Needed to continue their routes into Week 3

¹³ Don't kill to keep the **Stranger's** route open for Week 3 (needs 7+ points). Otherwise, let her die



Penny

Day 1	Day 2	Day 3	Day 4	Day 5
Give Pen/Ignore ¹	[4 possible] ⁴	Sure, no problem ⁷	Defend ¹⁰	Sit down ¹³
Ignore/Punch ²	[5 possible] ⁵	[6 possible] ⁸	Don't visit ¹¹	Eavesdrop/Leave ¹⁴
[4 possible] ³	[8 possible] ⁶	[4 possible] ⁹	Blakeman/Caroline ¹²	Lie/Give info ¹⁵

¹ Giving the pen to **Zoey** gives a point for her sub-route

² Choose Ignore to lead into Ash or Isabella, choose Punch to lead into Caroline or Holmes

³ Check out the club for **Ash**, Don't for **Isabella**, Apologize for **Caroline**, Backtalk for **Holmes** sub-route

⁴ Got to art class for **Jules**, Skip it for **Rachel**, Text back for **Emma**, Ignore Text for **Malia**

⁵ Check out for **Zoey** sub-route and **Katy** point, Go to club for **Ash**, Do neither for **Isabella**, Study History for **Madison** or Study Science for **Trish**

⁶ Choose Research for **Trish**, Doom Metal for **Katy**, Camgirls for **SluttyDemon**, Take the Blame for **Ash**, Act Offended for **Chloe**, Sharks for **Isabella**, Reapers or no library for **Sarah**, or Library for **Rachel**

⁷ Go with **Penny** for her point or stay in class for **Zoey** sub-route. Penny's route will always be open at the end of Week 1 (Day 7). However, Penny will need 7+ points by the end of Week 2, so only 3 of Penny's points can be sacrificed by Day 14. Likewise, Zoey always is open after Week 1, but also needs 7+ after

⁸ If you punched Caleb, choose "He started it" for **Trish** or "I started it" for **Holmes** sub-route. If you didn't punch Caleb, choose "Tell him" for **Jenna** or "Don't Tell Him" for **Sarah**. Otherwise, leave the school for **Isabella** or explore it for **Rachel**

⁹ Choose Downtown for **Jules**, Macarons for **Madison**, Pizza for **Emma** or visit **Katy**

¹⁰ Choose Defend for a **Madison** or **Jenna** point (later Penny or Chloe), or Bully for a **Jules** point (later Malia or Caroline). For max Penny points, choose defend

¹¹ Choose to not visit the dorms or the science lab for a **Penny** point. Go to the dorms for **Rachel** (later Katy or Sarah). Go to the lab for **Trish** (later Chloe or Emma)

¹² Choose Dean Blakeman for **Malia** or a point for **Caroline**. If you didn't see Penny in the earlier scene, choose Zombie movie for **Katy**, Classic movie for **Sarah**, Order for **Chloe** or Chaos for **Emma**

¹³ If you defended on Day 4, choose Sit Down for **Penny's** point or Watch Video for **Chloe**. Otherwise "Think about it" for **Malia** or visit **Caroline**

¹⁴ Choose Eavesdrop for a necessary **Madison** scene or a point for **Emma** otherwise

¹⁵ Choose Lie for a necessary **Jules** point or a point for **Holmes** sub-route otherwise

Day 6	Day 7	Day 8	Day 9	Day 10
Help her ¹	[3 possible] ⁴	[4 possible] ⁷	[4 possible] ¹⁰	[4 possible] ¹³
[3 possible] ²	[4 possible] ⁵	Talk with Penny ⁸	[4 possible] ¹¹	[4 possible] ¹⁴
[5 possible] ³	Shop with Penny ⁶	[3 possible] ⁹	[3 possible] ¹²	Date with Penny ¹⁵

¹ Choose "Help her" for **Penny**. Choose **Malia** if you want to keep Chloe's route open

- ² Choose Movies for **Ash**, Restaurant for **Madison** or neither for **Sarah**
- ³ Choose to go to Bob's Corner to secure **Katy** or **Isabella's** route. Choose Say Hello to secure **Trish** or **Holmes** sub-route. Otherwise a point for **Jenna**
- ⁴ Point for **Jules** which leads into a necessary Jenna scene, or a necessary **Malia** point which leads into 2 necessary Chloe scenes, or 2 back-to-back points for **Caroline**
- ⁵ Choose Walk Across Street to secure **Jenna's** route, Choose to listen to **Chloe** to begin securing her route, otherwise points for **Rachel** or **Caroline**
- ⁶ A point for **Penny**, **Emma** or **Chloe**. Chloe's point here is necessary to secure her route
- ⁷ Necessary scenes for **Emma** or **Sarah** which can be pushed back. Otherwise, points for **Trish** or **Madison**
- ⁸ An ero scene for **Penny**. Otherwise, a necessary scene for **Isabella** which won't reoccur, a necessary scene for **Jenna** which can be pushed back, or a **Caroline** ero scene
- ⁹ Necessary scene for **Malia** which can be pushed back. Otherwise, ero scenes for **Katy** or **SluttyDemon**
- ¹⁰ A necessary scene for **Holmes** sub-route which can be pushed back. Otherwise, a last chance scene for **Jenna**, a necessary scene for **Rachel** which can be pushed back or a point for **Katy**
- ¹¹ One of two scenes for **Emma**, a last chance scene for **Caroline**, a necessary scene for **Trish** which can be pushed back, or an **Ash** ero scene
- ¹² Necessary scene for **Jules** which won't reoccur, or necessary scenes for **Madison** or **Chloe** which do
- ¹³ Last chance scene for **Holmes** sub-route, one of two necessary scenes for **Rachel**, one of two scenes for **Sarah** or a **Madison** ero scene
- ¹⁴ One of two **Trish** scenes, necessary scenes for **Ash** or **Isabella** which can be pushed back, or a **Jenna** ero scene
- ¹⁵ A **Penny** ero scene or a **Holmes** sub-route ero scene. Otherwise, last chance scenes for **Malia** or **Madison** or a **Caroline** ero scene

Day 11	Day 12	Day 13	Day 14	
[4 possible] ¹	[6 possible] ⁴	[4 possible] ⁷	[4 possible] ¹⁰	
[4 possible] ²	[4 possible] ⁵	[4 possible] ⁸	[4 possible] ¹¹	
[4 possible] ³	[5 possible] ⁶	[5 possible] ⁹	[3 possible] ¹²	
			Don't Kill	

- ¹ Last chance scene for **Rachel**, necessary scenes for **Sarah** or **Chloe** which can be pushed back or an **Emma** ero scene
- ² Last chance scene for **Isabella**, one of two necessary scenes for **Ash**, a necessary scene for **Jules** which can be pushed back or a **Jenna** ero scene
- ³ Last chance scene for **Chloe**, a necessary scene for **Malia** which can be pushed back, or ero scenes for **Zoey** sub-route or **Katy**
- ⁴ Last chance scenes for **Chloe**, **Sarah**, **Caroline**. Otherwise, ero scenes for **Rachel**, **Isabella** or **Zoey** sub-route
- ⁵ One of two necessary scenes for **Emma** or **Jules**, one of two ero scenes for **Ash**, or a necessary scene for **Madison** which won't reoccur
- ⁶ A necessary scene for **Holmes** sub-route which can be pushed back. Otherwise, a last chance scene for **Malia**, necessary scenes for **Katy** or **Trish** which won't reoccur or a **Chloe** ero scene
- ⁷ Last chance necessary scene for **Jules** or a non-necessary ero scene for her, one of two non-necessary ero scenes for **Isabella**, a last chance scene for **Emma** or a **Sarah** ero scene

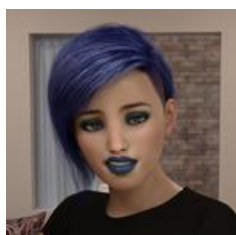
⁸ A non-necessary ero scene for **Zoey's** sub-route. Otherwise, a necessary ero scene for **Jenna** or a non-necessary ero scenes for **Malia** or **Rachel**. None of the scenes during this time repeat again

⁹ A non-necessary ero scene for **Penny** or one of two **Holmes** sub-route ero scenes. Otherwise, a necessary **Emma** or **Trish** scene which won't reoccur or a last chance non-necessary ero scene for **Chloe**

¹⁰ Necessary scenes for **Ash, Caroline, Chloe** or **Malia**. Needed to continue their routes into Week 3

¹¹ Necessary scenes for **Holmes** sub-route or **Isabella, Madison** or **Rachel**. Needed to continue their routes into Week 3

¹² Necessary scenes for **Jules, Katy** or **Sarah**. Needed to continue their routes into Week 3



Rachel

Day 1	Day 2	Day 3	Day 4	Day 5
Give Pen/Ignore ¹	Skip art class ⁴	Sure/Sorry ⁷	Defend/Bully ¹⁰	[4 possible] ¹³
Ignore Caleb ²	[4 possible] ⁵	Explore college ⁸	Visit Rachel dorm ¹¹	Leave them ¹⁴
Decline club ³	Go to library ⁶	[3 possible] ⁹	Zombie/Classic ¹²	Lie ¹⁵

¹ Rachel shares a sub-route with Zoey and Katy, both of which benefit from giving **Zoey** the pen here. You miss a Rachel point on Day 2 because of it, but it can be made up later. If you're not interested in either sub-route, then ignore Zoey here

² It's important to ignore Caleb here in order to meet Rachel early, especially if on Zoey or Katy sub-route. Punching him costs a Rachel point on Day 3. Rachel needs 3+ by the end of Week 1 and losing points early gives little room for error later, especially if on the Zoey or Katy sub-routes (which costs 1 already)

³ While declining to go to the club leads to Isabella (who becomes non-viable at the end of Week 2), this choice leads to a Rachel point on Day 3. Otherwise, you can check out the club for **Ash**

⁴ Skip art class for **Rachel**. Otherwise, go to it for **Jules**, Text Back for **Emma** or Ignore Text for **Malia**. Try to keep Emma's points less than Rachel's before Day 4

⁵ If you gave her the pen, go with **Zoey** here for hers and **Katy's** point, decline and got to the club for **Ash**. If you ignored Zoey, study History for Madison (later Rachel) or Science for **Trish**. However, Madison's route becomes non-viable at the end of Week 2, so meeting her is mostly for Rachel's point

⁶ If going for max **Rachel** points, go to the library. If on **Katy's** sub-route, choose Doom Metal. Otherwise, choose "Take the blame" for **Ash**, choose "Act offended" for **Chloe**, don't go to the library after Madison for **Sarah** (sacrifices a Rachel point), Research for **Trish** or Camgirls for **SluttyDemon**. To not miss out on Rachel's Day 4 point, you want to keep Trish's points below Rachel's, however

⁷ Point for **Penny** or **Zoey** sub-route. Both routes are active at end of Week 1 regardless

⁸ If you ignored Caleb and declined Joey's club, then explore the school for a **Rachel** point. This is the earliest you can secure Rachel's route for Week 1. If you went to the club, choose "Tell Him" for **Jenna** or don't for **Sarah**. If you punched Caleb, choose "He started it" for **Trish**. Once again, keep Trish's point below Rachel's to get her Day 4 point Holmes is non-viable by Week 2

⁹ Choose to visit **Katy** for her sub-route. Otherwise, choose Pizza for **Emma**, Downtown for **Jules**. Just like Trish, keep Emma's points low for Rachel's route. Madison's route becomes non-viable by Week 3

¹⁰ Choose to Defend for **Jenna's** point (later Chloe or Penny) or Bully for **Jules** (later Malia or Caroline)

¹¹ If you've kept her points above Emma's, Trish's and Chloe's, then visit the dorms here for **Rachel**. Otherwise, go to the science lab for **Trish** (later Chloe or Emma) or neither for **Penny** (later Malia or Caroline)

¹² If you went to the dorms, choose Zombie movie for **Katy** sub-route or Classic movie for **Sarah**. Otherwise, choose Dean Blakeman for **Malia**, Order for Chloe or Chaos for **Emma**

¹³ Choose Watch Video for **Chloe**, Sit Down for **Penny**, Office for **Caroline**, Think About It for **Malia**. It's possible to start any of these routes here if you want to sacrifice Rachel's 5th point on Day 7

¹⁴ Choose Leave Them for **Emma's** point. Madison becomes non-viable at the end of Week 2, although Emma's route is difficult to maintain on Rachel's

¹⁵ Necessary scene for **Jules**. Holmes is non-viable at the end of Week 2

Day 6	Day 7	Day 8	Day 9	Day 10
Help her/Answer ¹	[3 possible] ⁴	[3 possible] ⁷	Talk with Rachel ¹⁰	Rachel's Dorm ¹³
Stay with Sarah ²	Rachel's Dorm ⁵	[3 possible] ⁸	[4 possible] ¹¹	[3 possible] ¹⁴
[3 possible] ³	[3 possible] ⁶	[3 possible] ⁹	Jules/Chloe ¹²	[3 possible] ¹⁵

¹ Point for **Penny** or **Malia**. Malia leads into Rachel's 5th point on Day 7, as well as necessary for keeping Chloe's route open

² **Ash** most likely wasn't met on Rachel's route. Madison's route becomes non-viable later. **Sarah** is the most likely option here, although her route is difficult on Rachel's

³ If you're on the **Katy** sub-route, go to Bob's Corner to secure her route. Otherwise, watch **Jenna** in the alleyway for her point or Say Hello to Jenna and go left to secure **Trish's** route (difficult on this route). Both Isabella and Holmes are non-viable later

⁴ Meet with **Malia** for her point or not for **Caroline**. Both decisions lead towards Rachel's 5th point. Otherwise, it's a point for **Jules** if you lied for her

⁵ Go back to college (specifically the dorms) for **Rachel's** last point of the week. Otherwise, it can be sacrificed to secure **Jenna's** (difficult on Rachel's route) or **Chloe's** route or a point for **Caroline**

⁶ Keep listening to secure **Chloe's** route. Otherwise a point for **Penny** or **Emma**

⁷ Necessary scenes for **Emma** or **Sarah** that can be pushed back later. Otherwise, a point for **Trish**

⁸ Necessary scene for **Jenna** which can be pushed back. Otherwise, ero scenes for **Penny** or **Caroline**

⁹ A non-reoccurring ero scene for **Katy** sub-route. Otherwise, a necessary scene for **Malia** which can be pushed back or a **SluttyDemon** ero scene

¹⁰ A necessary scene for **Rachel** which can be pushed back later. Otherwise, a **Katy** sub-route scene or one of two **Jenna** scenes. If on Katy sub-route, it's recommended to take it since it won't reoccur

¹¹ One of two necessary **Emma** scenes, a last chance **Caroline** scene, a necessary **Trish** scene which can be pushed back or an **Ash** ero scene

¹² A necessary **Jules** scene which won't reoccur or a necessary **Chloe** scene which will

¹³ Last chance for **Rachel's** previous necessary scene or a new necessary scene. Otherwise, one of two **Sarah** scenes

¹⁴ One of two **Trish** scenes, a necessary **Ash** scene which can be pushed back or a **Jenna** ero scene. Most of these routes are hard to secure by the end of Week 1 with Rachel

¹⁵ Last chance scene for **Malia**. Otherwise, ero scenes for **Penny** or **Caroline**

Day 11	Day 12	Day 13	Day 14	
[4 possible] ¹	Rachel at library ⁴	[3 possible] ⁷	[4 possible] ¹⁰	
[3 possible] ²	[3 possible] ⁵	Movie w/ Rachel ⁸	Rachel Ritual ¹¹	
[4 possible] ³	[4 possible] ⁶	[4 possible] ⁹	[3 possible] ¹²	
			Don't Kill/Kill ¹³	

¹ Last chance for **Rachel's** previous necessary scene. Otherwise, necessary scenes for **Chloe** or **Sarah** or an Emma **ero** scene

² One of two necessary **Ash** scenes, a necessary scene for **Jules** which can be pushed back or a **Jenna** ero scene

³ An ero scene for **Zoey** sub-route or **Katy** sub-route. Otherwise, a last chance scene for **Chloe** or a necessary scene for **Malia** which can be pushed back later

⁴ An ero scene for **Rachel** or **Zoey** sub-route, neither of which reoccur. Otherwise, last chance scenes for **Chloe**, **Caroline** or **Sarah**

⁵ One of two necessary scenes for **Emma** or **Jules**, or one of two **Ash** ero scenes

⁶ A necessary scene for **Katy** sub-route which won't reoccur. Otherwise, last chance scenes for **Malia** or **Trish** or a **Chloe** ero scene

⁷ Last chance necessary scene for **Jules** or a non-necessary ero scene for her, a last chance scene for **Emma** or a **Sarah** ero scene

⁸ A non-necessary ero scene for **Rachel** or **Zoey's** sub-route. Otherwise, a necessary ero scene for **Jenna** or a non-necessary ero scene for **Malia**. None of the scenes during this time repeat again

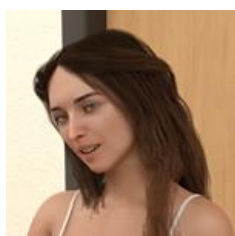
⁹ A non-necessary ero scene for **Penny**, a last chance non-necessary ero scene for **Chloe**, or a necessary scene for **Trish** or **Emma** which won't reoccur

¹⁰ Necessary scenes for **Ash**, **Caroline**, **Chloe** or **Malia**. Needed to continue their routes into Week 3

¹¹ A necessary **Rachel** scene which won't reoccur. Needed to continue her route into Week 3

¹² Necessary scenes for **Katy** sub-route or **Jules** or **Sarah**. Needed to continue their routes into Week 3

¹³ Don't kill to keep the **Stranger's** route open for Week 3 (needs 7+ points). Otherwise, let her die



Sarah

Day 1	Day 2	Day 3	Day 4	Day 5
Give Pen/Ignore ¹	[3 possible] ⁴	Sure/Sorry ⁷	Bully/Defend ¹⁰	[4 possible] ¹³
Punch/Ignore ²	[5 possible] ⁵	Don't tell him ⁸	Visit dormitories ¹¹	Eavesdrop/Leave ¹⁴
[4 possible] ³	Reapers/No library ⁶	Pizza/Macarons ⁹	Classic movie ¹²	Do something else ¹⁵
				Give info ¹⁶

¹ Giving **Zoey** the pen or ignoring here both lead to Sarah's first meeting. However, if you want to go for either her Ash or Isabella sub-routes, give her Zoey the pen

² If going for Ash or Isabella sub-routes, ignore Caleb here. Otherwise, choose either punch or ignore

³ If you ignored Caleb, check out the club for **Ash** sub-route or decline the club for **Isabella** sub-route. These sub-routes are mutually exclusive so pick one or the other. In order to secure either girl's route, they need to be started here. However, Sarah shares several opposing choices with both of them during Week 1. Her requirement to secure this week is 3+ points (as it Ash's), so it's a bit of a balancing act making sure they each reach that threshold. Going to the club is also necessary if you want Sarah's max points and no sub-route. If you punched Caleb, Apologize for **Caroline** or "I'll do what I want" for **Holmes**

⁴ Skip art class for **Rachel**, Text back for **Emma**, Ignore text for **Malia**. Jules becomes non-viable at the end of Week 2. For max Sarah points, you want to keep Rachel's points higher than Emma's

⁵ If you gave the pen to Zoey, decline her here for **Ash** or **Isabella's** sub-route. Otherwise, go with her for a **Zoey's** and Katy's point. If you ignored Zoey, and want max points with Sarah, choose History for **Madison**, or choose Science for **Trish**. Choosing anything other Isabella or Madison's scenes here costs 1 Sarah point. For max Sarah points, you want to keep Rachel's points higher than Trish's. Also, Katy becomes in-viable at the end of Week 2

⁶ If you saw Isabella here, choose Reapers for **Sarah's** point or if you saw Madison, don't go to the library for a different Sarah point. Otherwise, choose "Take the blame" for **Ash** sub-route, "Act Offended" for **Chloe**, Sharks for **Isabella** sub-route, Library for **Rachel**, Research for **Trish** or Camgirls for **SluttyDemon**. For max Sarah points, Rachel's points need to be higher than Chloe and Trish's combined. Also, Katy becomes non-viable later

⁷ Choose Sure for **Penny**, Sorry for **Zoey**. Both routes are active at end of Week 1 regardless

⁸ Choose "Don't tell him" for **Sarah's** point. Otherwise, it's a point for **Jenna** if you went to the club. If you never went to the club or punched Caleb, leave the school for **Isabella's** sub-route or explore it for **Rachel**. If you punched Caleb, choose "He started it" for **Trish** or "I started it" for **Holmes**

⁹ Choose Pizza for **Emma** or Macarons for **Madison**. Katy and Jules are non-viable at the end of Week 2. Avoid Emma if she's at least one point lower than Rachel's points for max Sarah points

¹⁰ Choose Defend for **Jenna** or **Madison** (later Chloe or Penny) or Bully for Jules (later Malia or Caroline). Jules becomes non-viable later, however

¹¹ If Rachel's points are higher than Trish, Chloe and Emma's combined, go to the dorm for **Rachel** (later Sarah). If those three are higher than Rachel's, go to the science lab for **Trish** (later Emma or Chloe). Do neither for **Penny** (later Malia or Caroline)

¹² Choose Classic movie for **Sarah's** point. Otherwise, choose Order for **Chloe**, Chaos for **Emma**, Dean Blakeman for **Malia**, or a point for Caroline. Katy is non-viable later

¹³ Choose Watch Video for **Chloe**, Sit Down for **Penny**, Office for **Caroline**, Think About It for **Malia**

¹⁴ Choose Eavesdrop for a necessary **Madison** point. Otherwise, a point for **Emma**

¹⁵ Choose "Do something else" for **Sarah's** point or go to the club for **Ash** sub-route. After this scene, there is one more choice on Day 6 that they share, with 3+ points needed to secure each route by Day 7

¹⁶ Choose to Give info for **Holmes**. This point is necessary for Jules, but she is later non-viable anyway

Day 6	Day 7	Day 8	Day 9	Day 10
Help her/Answer ¹	[3 possible] ⁵	Slowly go to class ⁸	[3 possible] ¹¹	Skip class/Slowly ¹⁴
Stay with Sarah ²	[4 possible] ⁶	[3 possible] ⁹	[4 possible] ¹²	[4 possible] ¹⁵
[4 possible] ³	[3 possible] ⁷	Camgirls/Malia ¹⁰	Downtown/Chloe ¹³	[5 possible] ¹⁶
Go Left/Right ⁴				

¹ Point for **Penny** or **Malia**. Choosing Answer to keep Chloe's route open, as well

² **Sarah's** last point for Week 1. If she has 3+ points already, this point can be sacrificed to keep **Ash's** sub-route open by going to the movies. Otherwise, a point for **Madison**

³ Visit **Isabella** at Bob's Corner to secure her sub-route. Otherwise, Just Watch for **Jenna** or Say Hello for Trish or Holmes later. Katy is non-viable at the end of Week 2

- ⁴ It may be possible to secure **Trish** (Left) or **Holmes** (Right) route here, if you punched Caleb on Day 1
- ⁵ Point for Jules (later necessary Jenna scene), **Caroline** (later herself Rachel) or **Malia** (later Rachel or necessary Chloe scenes). Once again, Jules is non-viable later
- ⁶ Necessary points for **Jenna** or **Chloe**. Otherwise, points for **Rachel** or **Caroline**
- ⁷ Necessary point for **Chloe**. Otherwise, points for **Emma** or **Penny**
- ⁸ Necessary scene for **Sarah** which can be pushed back later. Otherwise, a necessary scene for **Emma** which can be pushed back or points for **Trish** or **Madison**
- ⁹ Necessary scene for **Isabella** sub-route which won't reoccur so take it now. Otherwise, a necessary scene for **Jenna** which can be pushed back or ero scenes for **Penny** or **Caroline**
- ¹⁰ Necessary scene for **Malia** which can be pushed back or a **SluttyDemon** ero scene
- ¹¹ Necessary scenes for **Rachel** or **Holmes** which can be pushed back or one of two Jenna scenes
- ¹² An **Ash** sub-route ero scene. Otherwise, one of two necessary **Emma** scenes, a last chance **Caroline** scene, a necessary **Trish** scene which can be pushed back
- ¹³ Necessary scenes for **Madison** or **Chloe** which can be pushed back later
- ¹⁴ A non-necessary **Sarah** ero scene (or last chance for her previous scene). Otherwise, one of two necessary **Rachel** scenes, last chance for a **Holmes** scene or a **Madison** ero scene
- ¹⁵ Necessary scenes for **Ash** sub-route or **Isabella** sub-route which can be pushed back. Otherwise, one of two **Trish** scenes or a **Jenna** ero scene
- ¹⁶ Last chance scenes for **Malia** or **Madison**. Otherwise, ero scenes for **Penny**, **Caroline** or **Holmes**

Day 11	Day 12	Day 13	Day 14	
Give Sarah photo ¹	[6 possible] ⁴	Sarah's apartment ⁷	[4 possible] ¹⁰	
[3 possible] ²	[3 possible] ⁵	[4 possible] ⁸	[4 possible] ¹¹	
[3 possible] ³	[4 possible] ⁶	[5 possible] ⁹	Find Sarah ¹²	
			Don't Kill/Kill ¹³	

- ¹ Necessary scene here for **Sarah** which can be pushed back later. Otherwise, a last chance **Rachel** scene, a necessary **Chloe** scene which can be pushed back or an **Emma** ero scene
- ² Last chance scene for **Isabella** sub-route or one of two necessary **Ash** sub-routes scenes. Otherwise, a **Jenna** ero scene
- ³ Last chance scene for **Chloe**, a necessary scene for **Malia** which can be pushed back or a **Zoey** ero scene
- ⁴ Last chance for **Sarah's** Day 11 scene or a non-necessary **Isabella** sub-route scene which won't reoccur. Otherwise, last chance scenes for **Caroline** or **Chloe**, or ero scenes for **Zoey** or **Rachel**
- ⁵ One of two **Ash** sub-route ero scenes. Otherwise, one of two necessary **Emma** scenes, a necessary scene for **Madison** which won't reoccur
- ⁶ Last chance scenes for **Malia**, a necessary scene for **Trish** which won't reoccur, a necessary scene for **Holmes** which will reoccur or a **Chloe** ero scene
- ⁷ Go to **Sarah's** apartment for a non-necessary ero scene. Otherwise, a non-necessary ero scene for **Isabella's** sub-route or a last chance scene for **Emma**
- ⁸ A necessary ero scene for **Jenna**. Otherwise, non-necessary ero scenes for **Zoey**, **Rachel** or **Malia**. None of the scenes during this time repeat again
- ⁹ Necessary scenes for **Emma** or **Trish** which won't reoccur, a last chance non-necessary ero scene for **Chloe**, one of two scenes for **Holmes** or a non-necessary ero scene for **Penny**

¹⁰ Necessary scenes for **Ash** sub-route or **Caroline, Chloe** or **Malia**. Needed to continue their routes into Week 3

¹¹ Necessary scenes for **Isabella** sub-route or **Holmes, Madison** or **Rachel**. Needed to continue their routes into Week 3

¹² A necessary **Rachel** scene which won't reoccur. Needed to continue her route into Week 3. Choose "You're right," "Don't you want more," "You've improved others," "There's one person," "Joy and sorrow," and "I want to be with you." To convince her, you need 4+ points and each of those is worth 1 point. Telling her about Ash or Isabella (if on their routes) is worth 2 points each.

¹³ Don't kill to keep the **Stranger's** route open for Week 3 (needs 7+ points). Otherwise, let her die



Trish

Day 1	Day 2	Day 3	Day 4	Day 5
Ignore Zoey ¹	[4 possible] ⁴	Sure/Sorry ⁷	Defend/Bully ¹⁰	[4 possible] ¹³
Punch/Ignore ²	Study science ⁵	He started it ⁸	Visit Trish ¹¹	Eavesdrop/Leave ¹⁴
Apologize/Club ³	Research ⁶	Pizza/Explore ⁹	Order/Chaos ¹²	Lie ¹⁵

¹ In order to earn 3+ points (or 2+ if on Madison sub-route) by Day 6, you have to ignore Zoey here

² If you want max points with Trish or an easier time securing Caroline or Malia's sub-route, punch Caleb here. Otherwise, ignore him to meet Ash or Isabella later

³ Choose Apologize for **Caroline's** sub-route or go to the club for **Ash**. Isabella is non-viable with Trish

⁴ Go to art class for **Jules**, skip class for **Rachel**, text back for **Emma** or ignore text for **Malia** sub-route

⁵ Choose Study Science for **Trish** (and another quick point). If you want to start her **Madison**-sub-route early, you can Study History here, but you need to have punched Caleb in order to earn enough points

⁶ Choose Research for another **Trish** point. Otherwise, go to the library for **Rachel**, leave campus for **Sarah** or choose Camgirls for **SluttyDemon**

⁷ Point for **Penny** or **Zoey**. Both routes are active at end of Week 1 regardless

⁸ If you punched Caleb, choose "He started it" for **Trish**. If you went to the club, choose "Tell him" for **Jenna** or don't for **Sarah**. If you didn't punch or go to the club, explore the campus for **Rachel**. Both Isabella and Holmes are non-viable on Trish's route. Also, make sure Trish and Emma's points combined are higher than Rachel's or you will miss another Trish point on Day 4

⁹ Choose Pizza for **Emma**, Explore Downtown for **Jules** or Macarons for **Madison** sub-route

¹⁰ Choose Defend for **Madison** sub-route or **Jenna** (later Chloe or Penny). Choose Bully for **Jules** (later Malia sub-route or Caroline sub-route)

¹¹ If earning points for Trish and Emma, go to the science lab for **Trish** (later Chloe or Emma). If **Rachel** is more than their points, going to the dorm earns you her point (later Sarah). Otherwise, it's a point for **Penny** (later Malia sub-route or Caroline sub-route). Both sub-routes are easier to complete but exclusive

¹² At the lab, choose Order for **Chloe** or Chaos for **Emma**. At the dorm, choose Classic movie for **Sarah**. Otherwise, choose Dean Blakeman for **Malia** sub-route or a point for **Caroline's** sub-route. Katy's route is non-viable

¹³ Choose Watch Video for **Chloe**, Sit Down for **Penny**, Office for **Caroline** sub-route, Think About It for **Malia** sub-route

¹⁴ Choose Eavesdrop for a necessary **Madison** sub-route scene or Leave Them for another **Emma** point

¹⁵ Necessary point for **Jules**. Holmes is non-viable with Trish's route

Day 6	Day 7	Day 8	Day 9	Day 10
Help her/Answer ¹	[3 possible] ⁴	Coffee w/ Trish ⁷	Jenna/Rachel ¹⁰	[3 possible] ¹³
[3 possible] ²	[4 possible] ⁵	[3 possible] ⁸	Look for Trish ¹¹	Visit Trish ¹⁴
Say hello ³	[3 possible] ⁶	Camgirls/Malia ⁹	[3 possible] ¹²	[4 possible] ¹⁵
Go left				

¹ Point for **Penny** or **Malia** sub-route. Choose Malia if you want to keep Chloe's route open, too

² Choose Restaurant for **Madison** sub-route, Movies for **Ash** or a point for **Sarah**

³ If you have 3+ points for Sarah (or 2+ and secured Madison's route), choose Say Hello to Jenna to begin securing Trish's route. If given a choice, choose Go Left in the alleyway to secure it

⁴ Point for **Jules** (later Jenna or Caroline), **Malia** sub-route (later Chloe or Rachel) or **Caroline** sub-route (later another point or Rachel)

⁵ A necessary **Jenna** or **Chloe** scene. Otherwise, points for **Rachel** or **Caroline** sub-route

⁶ Point for **Emma**, **Penny**, or **Chloe**. Chloe's point here is necessary

⁶ Point for **Madison**. She's the only viable route here

⁷ Non-necessary **Trish** or **Madison** sub-route scene. Otherwise, necessary scenes for Emma or Sarah which be pushed back later

⁸ Ero scenes for **Caroline** sub-route or **Penny**. Otherwise, a necessary scene for **Jenna** which can be pushed back later

⁹ Necessary scene for **Malia** sub-route which can be pushed back or a **SluttyDemon** ero scene

¹⁰ One of two **Jenna** scenes for a necessary **Rachel** scene which can be pushed back later

¹¹ Necessary scene for **Trish** that can be pushed back for a last chance **Caroline** sub-route scene. Otherwise, one of two **Emma** scenes for an **Ash** ero scene

¹² Necessary scene for **Jules** which won't reoccur. Otherwise, necessary scenes for **Madison** sub-route or **Chloe** which can be pushed back later

¹³ One of two necessary **Rachel** scenes, or an ero scene for **Madison** sub-route or **Sarah**

¹⁴ Last chance (or a non-necessary) scene for **Trish**. Otherwise, a necessary scene for **Ash** which can be pushed back or a **Jenna** ero scene

¹⁵ Last chance scenes for **Madison** sub-route or **Malia** sub-route, or an ero scene for **Caroline** sub-route or **Penny**

Day 11	Day 12	Day 13	Day 14	
[4 possible] ¹	[5 possible] ⁴	[3 possible] ⁷	[4 possible] ¹¹	
[3 possible] ²	[4 possible] ⁵	[4 possible] ⁸	Madison/Rachel ¹²	
[3 possible] ³	Friday Night Patrol ⁶	Saturday Night Patrol ⁹	Jules/Sarah ¹³	
		Take capsule/Don't ¹⁰	Don't Kill/Kill ¹⁴	

¹ Last chance scene for **Rachel**, necessary scenes for **Sarah** and **Chloe** which can be pushed back or an **Emma** ero scene

² One of two necessary Ash scenes, a necessary scene for Jules which can be pushed back or a Jenna ero scene

³ Necessary scene for **Malia** sub-route which reoccurs but conflicts with a necessary Trish scene. Take the Malia scene here to continue her sub-route. Otherwise, last chance scenes for **Chloe** or a **Zoey** ero scene

⁴ Necessary scene for **Caroline** sub-route which won't reoccur. Otherwise, last chance scene for **Sarah** or **Chloe** or ero scenes for **Zoey** or **Rachel**

⁵ Necessary scene for **Madison** sub-route which won't reoccur. Otherwise, one of two necessary scenes for **Jules** or **Emma**, or one of two ero scenes for **Ash**

⁶ A necessary scene for **Trish** which won't reoccur. Take this scene here to keep Trish's route open

⁷ Last chance necessary scene for **Jules** or a non-necessary ero scene for her, or a last chance scene for **Emma** or a **Sarah** ero scene

⁸ A non-necessary ero scene for **Malia's** sub-route. Otherwise, a necessary ero scene for **Jenna** or a non-necessary ero scenes for **Zoey** or **Rachel**. None of the scenes during this time repeat again

⁹ A necessary scene for **Trish's** route which won't reoccur. If you don't go with her here, she disappears

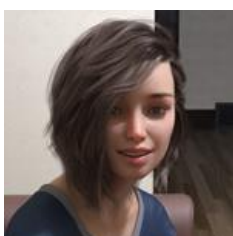
¹⁰ You can choose to take the capsule here or not. Both options will have different results later, so make a save for each if you want to see them both

¹¹ Necessary scenes for **Caroline** or **Malia's** sub-route, or **Ash** or **Chloe**. Needed to continue their routes into Week 3

¹² Necessary scenes for **Madison** sub-route or **Rachel**. Needed to continue their routes into Week 3

¹³ Necessary scenes for **Jules** or **Sarah**. Needed to continue their routes into Week 3

¹⁴ Don't kill to keep the **Stranger's** route open for Week 3 (needs 7+ points). Otherwise, let her die. Trish's route changes slightly depending on if the Stranger is alive in Week 3 or not



Zoey

Day 1	Day 2	Day 3	Day 4	Day 5
Give Zoey Pen ¹	[4 possible] ⁴	Sorry, professor ⁷	Defend/Bully ¹⁰	[4 possible] ¹⁴
Ignore/Punch ²	Check out city ⁵	[6 possible] ⁸	[3 possible] ¹¹	Eavesdrop/Leave ¹⁵
[4 possible] ³	[9 possible] ⁶	[4 possible] ⁹	[6 possible] ¹²	Lie/Give info ¹⁶
			Home Visit ¹³	

¹ Zoey's route will always be open at the end of Week 1 (Day 7). However, Zoey will need about 7+ points at the end of Week 2 to continue her route after. You can ignore her on Day 1, but you lose that point and another on Day 2, meaning you can only lose 1 more point and still remain on her route

² Choose Ignore to meet Ash, Jenna or Isabella later, or choose Punch to meet Caroline or Holmes. Ignoring is more helpful for Jenna and Rachel's sub-routes

- ³ Check out the club for **Ash**, decline the club for **Isabella**, apologize for **Caroline** or backtalk for **Holmes**. Meeting Ash here is necessary for the Jenna sub-route
- ⁴ Go to art class for **Jules**, skip class for **Rachel** sub-route, text back for **Emma** or ignore text for **Malia**
- ⁵ Check out the city for a **Zoey** and **Katy** sub-route point. Otherwise, go to the club for **Ash**, decline her with no club for **Isabella**, Study History for **Madison** or Study Science for **Trish**
- ⁶ Choose Doom Metal for **Katy** sub-route, Camgirls for **SluttyDemon**, “Take the blame” for **Ash**, “Act offended” for **Chloe**, Sharks for **Isabella**, Reapers or no library for **Sarah**, Library for **Rachel** sub-route or Research for **Trish**. If going for Rachel sub-route, keep her points higher than Trish, Emma and Chloe’s combined
- ⁷ Decline the professor for a **Zoey** point. Otherwise, go with **Penny** to start her sub-route
- ⁸ If you went to the club, choose “Tell him” for **Jenna** sub-route or don’t for **Sarah**. If you punched Caleb, choose “He started it” for **Trish** or “I started it for **Holmes**.” If you did neither, leave the campus for **Isabella** or explore it for **Rachel** sub-route
- ⁹ Choose Pizza for **Emma**, Downtown for **Jules**, Macarons for **Madison** or visit **Katy** for her sub-route
- ¹⁰ Choose Defend for **Madison** or **Jenna** sub-route (later a point Chloe or Penny sub-route). Choose Bully for **Jules** (later Malia or Caroline)
- ¹¹ Go to the dorms for **Rachel** sub-route (later Katy sub-route or Sarah), go to the science lab for **Trish** (later Chloe or Emma), or do neither for **Penny** sub-route (later Malia or Caroline)
- ¹² Choose Zombie movie for **Katy** sub-route, Classic movie for **Sarah**, Dean Blakeman for **Malia**, Assistant Dean for **Caroline**, Order for **Chloe**, Chaos for **Emma**
- ¹³ An automatic point for **Zoey**. There are two for her during Week 1
- ¹⁴ Choose Watch Video for **Chloe**, Sit Down for **Penny** sub-route, Office for **Caroline**, Think About It for **Malia**
- ¹⁵ Choose Eavesdrop for a necessary **Madison** scene or a point for **Emma** otherwise
- ¹⁶ Choose Lie for a necessary **Jules** point or a point for **Holmes** otherwise

Day 6	Day 7	Day 8	Day 9	Day 10
Help her/Answer ¹	[3 possible] ⁴	Morning After ⁸	[4 possible] ¹²	[4 possible] ¹⁶
[3 possible] ²	[4 possible] ⁵	[4 possible] ⁹	[4 possible] ¹³	[4 possible] ¹⁷
[5 possible] ³	[3 possible] ⁶	[4 possible] ¹⁰	[3 possible] ¹⁴	[5 possible] ¹⁸
	Date with Zoey ⁷	[3 possible] ¹¹	Stranger Attack ¹⁵	

- ¹ Point for **Penny** sub-route or **Malia**. Choose Malia if you want to keep Chloe’s route open. Choose Help Her to increase chance of Caroline scene on Day 7
- ² Choose Restaurant for **Madison**, Movies for **Ash** or stay with **Sarah**
- ³ Choose Bob’s Corner to secure **Katy** sub-route or **Isabella’s** route. Choose Say Hello after seeing Jenna to secure **Trish** or **Holmes**. Otherwise, it’s a point for **Jenna** sub-route (“Just watch”)
- ⁴ Point for **Jules** which leads into a required Jenna sub-route scene, or a necessary **Malia** point which leads into required 2 Chloe scenes, or 2 back-to-back points for **Caroline**
- ⁵ Cross the street to secure **Jenna’s** sub-route, choose Listen to begin securing **Chloe**. Otherwise points for **Rachel** sub-route or **Caroline**
- ⁶ A point for **Penny** sub-route, **Emma** or **Chloe**. Chloe’s point here is necessary to secure her route
- ⁷ The second automatic point for **Zoey** this week
- ⁸ The first automatic **Zoey** point for Week 2

⁹ Necessary scenes for **Emma** or **Sarah** which can be pushed back later. Otherwise, a point for **Madison** or **Trish**

¹⁰ Last chance necessary scene for **Isabella** which won't reoccur, a necessary **Jenna** sub-route scene which can be pushed back later, or ero scenes for **Penny** sub-route or **Caroline**. Jenna's scene needs to be taken here in order for a required scene to be offered on Day 9

¹¹ Necessary scene for **Malia** which can be pushed back later. Otherwise, ero scenes for **Katy** sub-route or **SluttyDemon**

¹² A non-necessary scene for **Jenna's** main route, but needed for her Zoey sub-route. Take it here in order to keep that sub-route open. Otherwise, necessary scenes for **Rachel** sub-route or **Holmes** or a point for **Katy** sub-route

¹³ One of two necessary scenes for **Emma** or **Caroline**. Otherwise, a necessary **Trish** scene which can be pushed back or an **Ash** ero scene

¹⁴ Necessary scene for **Jules** which won't reoccur. Otherwise, necessary scenes for **Chloe** or **Madison** which will reoccur

¹⁵ The second automatic Zoey point for Week 2

¹⁶ One of two necessary **Rachel** sub-route scenes. Otherwise, last chance scene for **Holmes**, one of two **Sarah** scenes or a **Madison** ero scene

¹⁷ Necessary scenes for **Isabella** or **Ash** which can be pushed back, one of two **Trish** scenes or a **Jenna** sub-route ero scene

¹⁸ Last chance scenes for **Madison** or **Malia**. Otherwise, ero scenes for **Penny** sub-route, **Caroline** or **Holmes**

Day 11	Day 12	Day 13	Day 14	
[4 possible] ¹	[6 possible] ⁴	[5 possible] ⁷	[4 possible] ¹⁰	
[4 possible] ²	[4 possible] ⁵	Movie with Zoey ⁸	[4 possible] ¹¹	
Visit Zoey's early ³	[5 possible] ⁶	[5 possible] ⁹	[3 possible] ¹²	
			Don't Kill/Kill ¹³	

¹ Last chance scene for **Rachel** sub-route. Otherwise, necessary scenes for **Sarah** or **Chloe** which can be pushed back or an **Emma** ero scene

² Last chance scene for **Isabella**, one of two necessary **Ash** scenes, a necessary scene for **Jules** which can be pushed back or a **Jenna** sub-route ero scene

³ Non-necessary ero scene for **Zoey**. At this point, all future Zoey points are optional and you'll have to purposefully seek her out to continue her route. Otherwise a point for **Katy** sub-route, the last chance for **Chloe's** necessary Day 9 scene or a necessary **Malia** scene which can be pushed back

⁴ Ero scenes for **Zoey** or **Rachel** sub-route. Otherwise, last chance scenes for **Sarah** or **Chloe**, a necessary scene for **Caroline** which won't reoccur or an **Isabella** ero scene

⁵ Necessary scene for **Madison** which won't reoccur. Otherwise, one of two necessary scenes for **Jules** or **Emma**, or one of two ero scenes for **Ash**

⁶ Necessary scene for **Katy** sub-route and **Trish** which won't reoccur. Otherwise, last chance for a **Malia** scene, a necessary **Holmes** scene which can be pushed back or a **Chloe** ero scene

⁷ Last chance necessary scene for **Jules** or a non-necessary ero scene for her, one of two non-necessary ero scenes for **Isabella**, a last chance scene for **Emma** or a **Sarah** ero scene

⁸ A non-necessary ero scene for **Zoey** or **Rachel's** sub-route or a necessary ero scene for **Jenna's** sub-route. Otherwise, a non-necessary ero scene for **Malia**. None of the scenes during this time repeat again

⁹ A non-necessary ero scene for **Penny's** sub-route which won't reoccur. Otherwise, a last chance non-necessary ero scene for **Chloe**, one of two scenes for **Holmes**, or a necessary scene for **Trish** or **Emma** which won't reoccur

¹⁰ Necessary scenes for **Ash, Caroline, Chloe** and **Malia**. Needed to continue their routes into Week 3

¹¹ Necessary scenes for **Rachel** sub-route, or **Holmes, Isabella** or **Madison**. Needed to continue their routes into Week 3

¹² Necessary scenes for **Katy** sub-route, or **Jules** or **Sarah**. Needed to continue their routes into Week 3

¹³ Don't kill to keep the **Stranger's** sub-route open for Week 3 (needs 7+ points). Otherwise, let her die. Zoey's route changes depending on if the Stranger is alive in Week 3 or not

