

Mystwood Manor v1.1.0

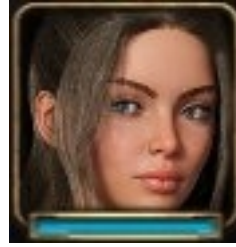
By [Faerin Games](#)

Staff Image Gallery Guide

Claim the outfits for the girls by completing each of their tier events and unlocking your reward. You are not required to check on the girls at any of the locations you assign them to in order to get the images shown in this guide. [Requirements](#) to unlock rewards may include staff and hotel levels as well as the appropriate rooms having already been renovated.



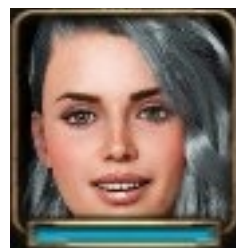
Julia



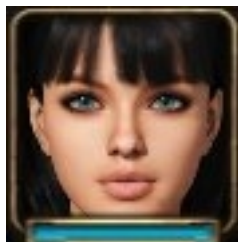
Amber



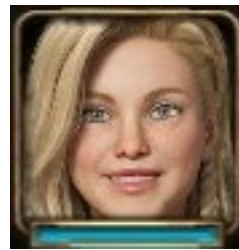
Riley



Kay



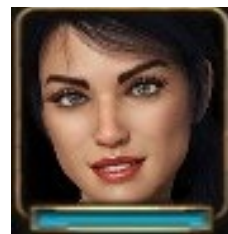
Laura



Annika



Hana



Catalina



Julia



Assign her to housekeeping (requires outfit level 1).



Assign her to housekeeping (requires outfit level 2).



Assign her to housekeeping (requires outfit level 3).



Assign her to housekeeping (requires outfit level 4).



Assign her to housekeeping (requires outfit level 5).



Assign her to housekeeping (requires [Halloween outfit*](#). Normal mode only).



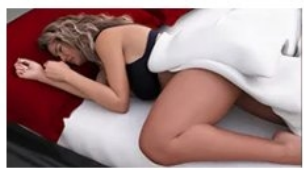
Assign her to housekeeping (requires bonus outfit. Normal mode only).



Assign her to the Study (requires hotel level 3 to renovate the Study).



Don't assign her to any tasks (requires outfit level 1).



Don't assign her to any tasks (requires outfit level 2).



Don't assign her to any tasks (requires outfit level 3).



Don't assign her to any tasks (requires outfit level 4).



Don't assign her to any tasks (requires outfit level 5).

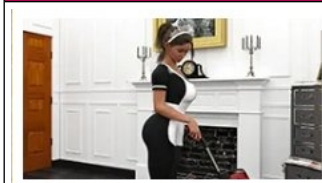


Complete her repeatable events (at night. Requires all other events to be completed.)

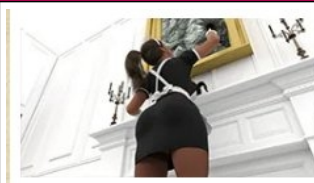




Amber



Assign her to housekeeping (requires outfit level 1).



Assign her to housekeeping (requires outfit level 2).



Assign her to housekeeping (requires outfit level 3).



Assign her to housekeeping (requires outfit level 4).



Assign her to housekeeping (requires outfit level 5).



Assign her to housekeeping (requires [Halloween outfit](#)*. Normal mode only).



Assign her to housekeeping (requires bonus outfit. Normal mode only).



Assign her to the Study (requires hotel level 3 to renovate the Study).



Don't assign her to any tasks (requires outfit level 1).



Don't assign her to any tasks (requires outfit level 2).



Don't assign her to any tasks (requires outfit level 3).



Don't assign her to any tasks (requires outfit level 4).

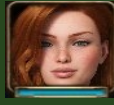


Don't assign her to any tasks (requires outfit level 5).



Complete her repeatable events (at night. Requires all other events to be completed).





Riley



Assign her to the Study (requires hotel level 3 to renovate the Study).



Don't assign her to any tasks (requires outfit level 1).



Don't assign her to any tasks (requires outfit level 2).



Don't assign her to any tasks (requires outfit level 3).



Don't assign her to any tasks (requires outfit level 4).



Don't assign her to any tasks (requires outfit level 5).



Complete her repeatable events (at night. Requires all other events to be completed).





Kay



Assign her to the maintenance room (requires outfit level 1).



Assign her to the maintenance room (requires outfit level 2).



Assign her to the maintenance room (requires outfit level 3).



Assign her to the maintenance room (requires outfit level 4).



Assign her to the maintenance room (requires outfit level 5).



Assign her to maintenance (requires [Halloween outfit](#)*. Normal mode only).



Assign her to the maintenance room (requires bonus outfit. Normal mode only).



Assign her to the Study (requires hotel level 3 to renovate the Study).



Don't assign her to any tasks (requires outfit level 1).



Don't assign her to any tasks (requires outfit level 2).



Don't assign her to any tasks (requires outfit level 3).



Don't assign her to any tasks (requires outfit level 4).



Don't assign her to any tasks (requires outfit level 5).



Complete her repeatable events (at night. Requires all other events to be completed).



Laura



Assign her to Healthcare (requires outfit level 1).



Assign her to Healthcare (requires outfit level 2).



Assign her to Healthcare (requires outfit level 3).



Assign her to Healthcare (requires outfit level 4).



Assign her to Healthcare (requires outfit level 5).



Assign her to healthcare (requires [Halloween outfit](#)*. Normal mode only).



Assign her to Healthcare (requires bonus outfit. Normal mode only).



Assign her to the Study (requires hotel level 3 to renovate the Study).



Don't assign her to any tasks (requires outfit level 1).



Don't assign her to any tasks (requires outfit level 2).



Don't assign her to any tasks (requires outfit level 3).



Don't assign her to any tasks (requires outfit level 4).



Don't assign her to any tasks (requires outfit level 5).



Complete her repeatable events (at night. Requires all other events to be completed).





Annika



Assign her to the Study (requires hotel level 3 to renovate the Study).



Don't assign her to any tasks (requires outfit level 1).



Don't assign her to any tasks (requires outfit level 2).



Don't assign her to any tasks (requires outfit level 3).



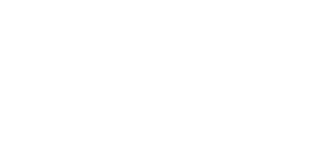
Don't assign her to any tasks (requires outfit level 4).

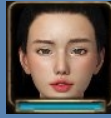


Don't assign her to any tasks (requires outfit level 5).



Complete her repeatable events (at night. Requires all other events to be completed).





Hana



Assign her to Security (requires outfit level 1).



Assign her to Security (requires outfit level 2).



Assign her to Security (requires outfit level 3).



Assign her to Security (requires outfit level 4).



Assign her to Security (requires outfit level 5).



Assign her to security (requires [Halloween outfit](#)*. Normal mode only).



Assign her to Security (requires bonus outfit. Normal mode only).



Assign her to the Study.



Don't assign her to any tasks (requires outfit level 1).



Don't assign her to any tasks (requires outfit level 2).



Don't assign her to any tasks (requires outfit level 3).



Don't assign her to any tasks (requires outfit level 4).

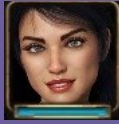


Don't assign her to any tasks (requires outfit level 5).



Complete her repeatable events (at night. Requires all other events to be completed).





Catalina



Assign her to the study.



Don't assign her to any tasks (requires outfit level 1).



Don't assign her to any tasks (requires outfit level 2).



Don't assign her to any tasks (requires outfit level 3).



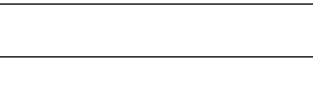
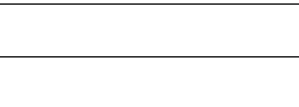
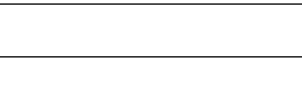
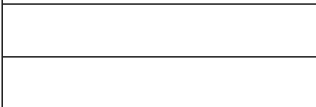
Don't assign her to any tasks (requires outfit level 4).



Don't assign her to any tasks (requires outfit level 5).



Complete her repeatable events (at night. Requires all other events to be completed).



Requirements



In this example, in order to unlock and claim Amber's next tier reward, it's required the hotel and staff levels are at 3.

Other requirements will include having Housekeeping (hotel level 1), Maintenance (hotel level 2), Healthcare (hotel level 3), Study (hotel level 3) and Security (hotel level 4) renovated.

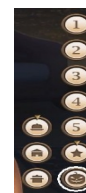
Others will require the girls resting (not assigned to any tasks) or completing repeatable events at night.

You may notice that Riley, Annika and Catalina do not have extra bonus images in their galleries. This is because they do not help with the "upkeep" of the hotel (housekeeping, maintenance, health care and security).

*Bonus Halloween gallery images can be unlocked by obtaining a "Halloween card" and equipping it to your MC. Then click on the pumpkin before you assign your staff (only pertains to girls responsible for "upkeep" of the hotel) to one of the upkeep rooms (housekeeping, maintenance, healthcare or security). Having the Halloween card equipped will also allow you to see the Halloween splash screen as well and hear the bonus Halloween track.



Halloween card



Pumpkin

