

Grandma's House 0.53 Walkthrough rev 1.22

Written by: [MrBubu](https://www.patreon.com/mrbubu)
<https://www.patreon.com/mrbubu>

Grandma's House

By Moonbox

<https://www.patreon.com/moonboxgames>



This walkthrough intends to show all the paths through the game in an objective way. Colors and styles are only meant to highlight elements, not influence your decision. There isn't a right or wrong way through the game, only you should decide.

Only decisions that have an impact on the story or your character are shown. There are obviously many scenes that can play differently based on your choices, but "cosmetic" differences or small alterations in the dialogues are not part of this walkthrough.

The PDF is best viewed on a touch screen where it is easy to drag, zoom in and out with the fingers.

On a PC with Acrobat Reader, make sure to use the "hand" icon to easily drag with the mouse. Use **Control + Mouse wheel** to zoom in or out.

Legend

Character and game related attributes that can be increased/decreased (i.e.: a number value) will be represented with an icon followed by the character/description name:  Bubu or  Bubu

More complex values will be written as text instead:

girls kissed +20

Reference to these values will reuse the same icon or text:

Bubu  is at least 5

girls kissed is at least 25

While the game is being developed, decisions that do not impact the story (yet) will be displayed like this:

 *Granny*

grandmas kissed +20

Icons

: +1 Relationship point : -1 Relationship point

Flow Symbols



Skip until the next section

Decision labels

When something you do can have an impact later on in the game, a label will be visible where it happens like this

decide something #123

In some rare cases decisions can be reversed, to distinguish it more easily the label will look like this

did not decide something #123

References to this label will also include the same number

so it is easy to track it down to where it happened (could be multiple places).

decided something #123

Some decision labels can denote a progression and sometimes we must check if the current value is above or below a certain threshold. To keep it succinct, all accepted values will be listed in brackets.

For example let's define some karate belts and assign each one to a numerical value:

0 ⇒ white belt #78, 1 ⇒ yellow belt #78, 2 ⇒ orange belt #78

If in the code the condition checks that the value must be at least 1 (`karate_belt >= 1`)

It will be listed like this: karate belt: **[yellow, orange] #78**

While the game is being developed, decisions that do not impact the story (yet) will be displayed like this:

agree #55

Reversed decisions that do not impact the story (yet) will be displayed like this:

did not agree #55

Check the last page of the walkthrough to learn how you can use the developer console to cheat alter their value for your benefit: [\(link\)](#).

Enjoy the game!

Table of Contents

Introduction	1
Table of Contents	2
VO.38	3
VO.39	4
VO.40	5
VO.41	6
VO.42	7
VO.43	8
VO.44	9
VO.45	10
VO.46	11
VO.47	12
VO.48	13
VO.49	14
VO.50	15
VO.51	16
VO.52	17
VO.53	18
Cheat without a MOD	19



Grandma's House V0.38

Only if not ok with drinking Jamila's breast milk ^{#66}
not breastfeeding from Jamila ^{#109}

Home

Sophia  is at least 1? No

Yes

Scene #1

Picnic

Scene #2

split a banana with Asami ^{#76}? No

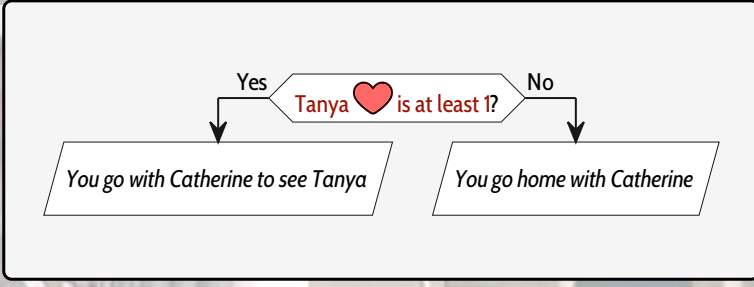
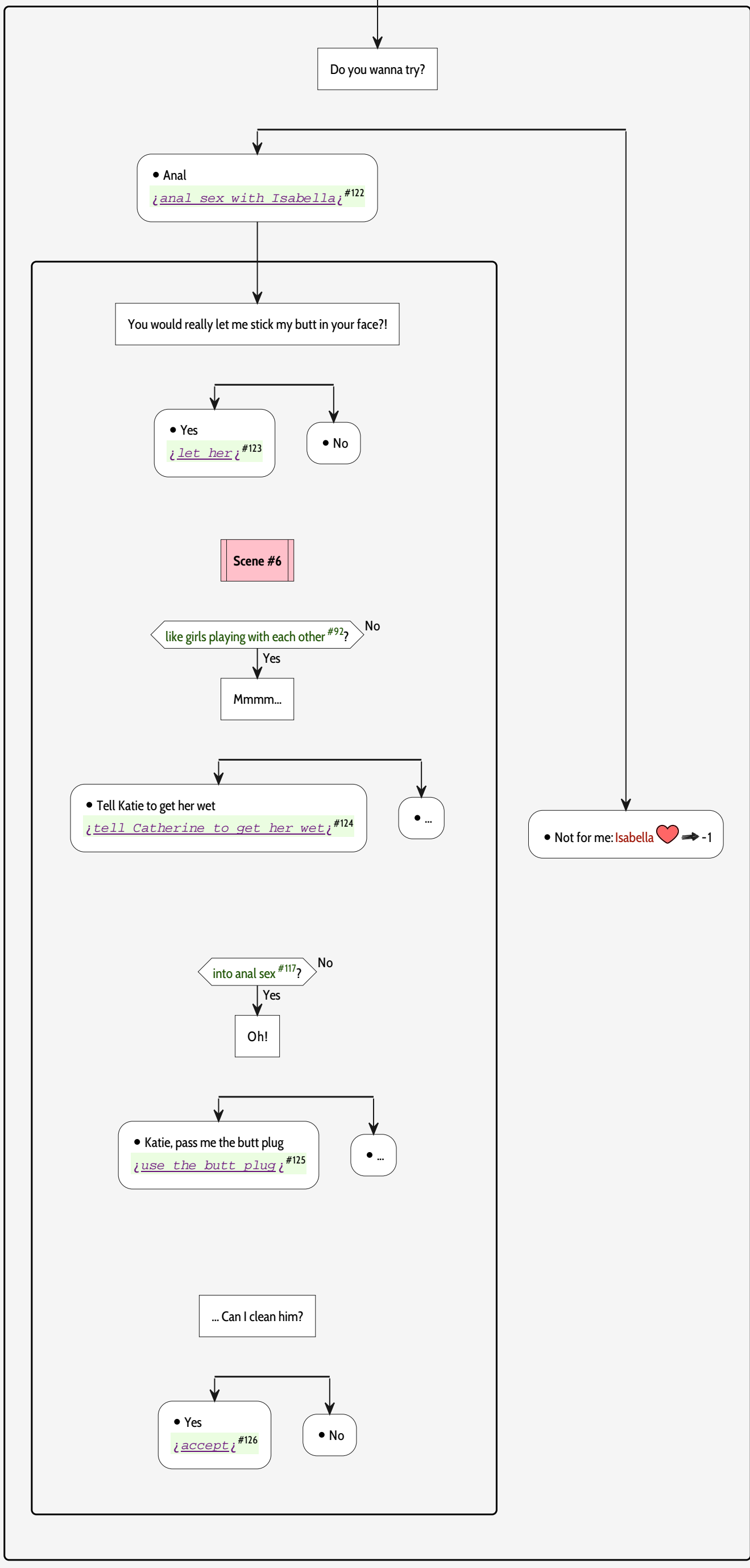
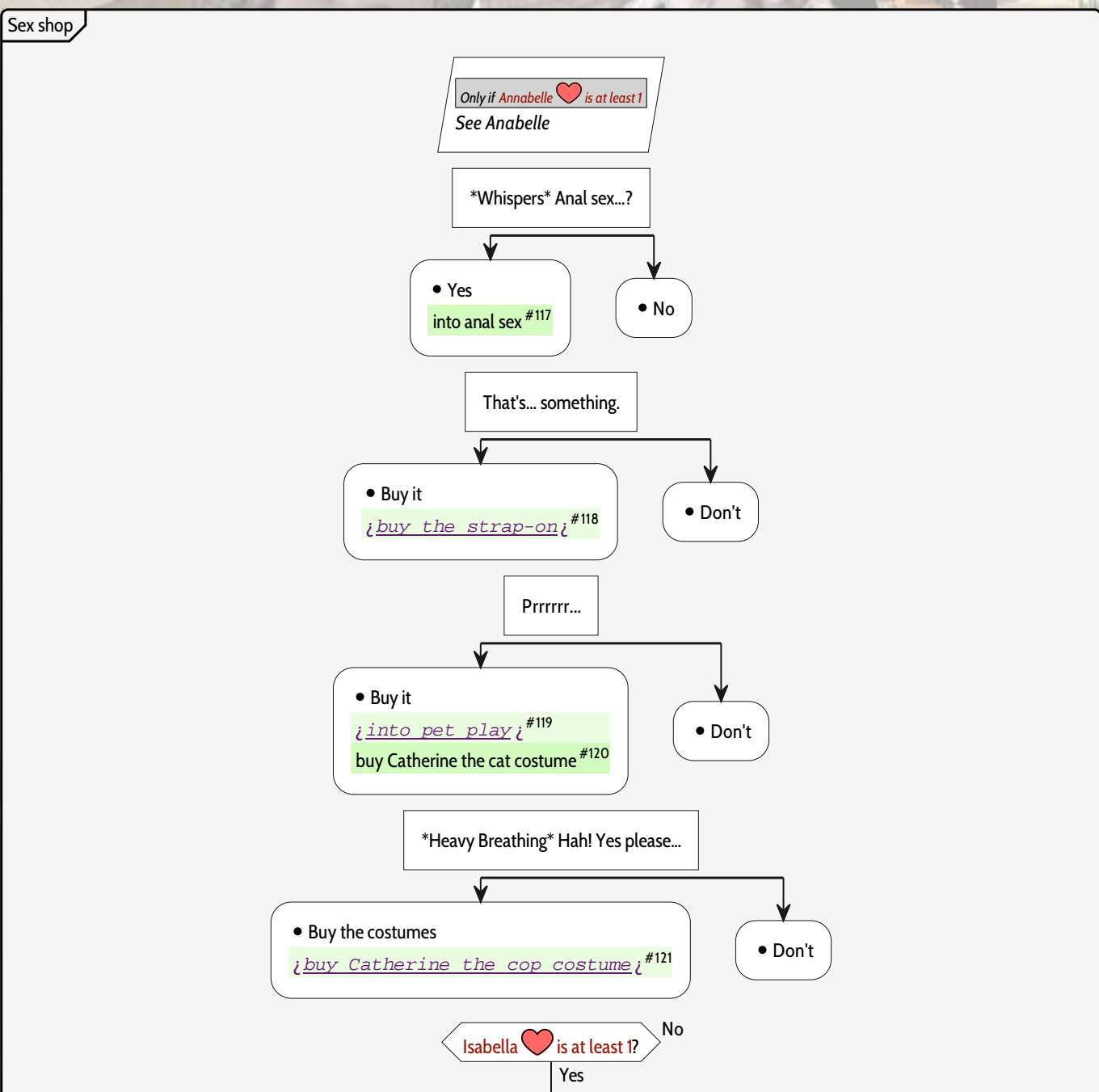
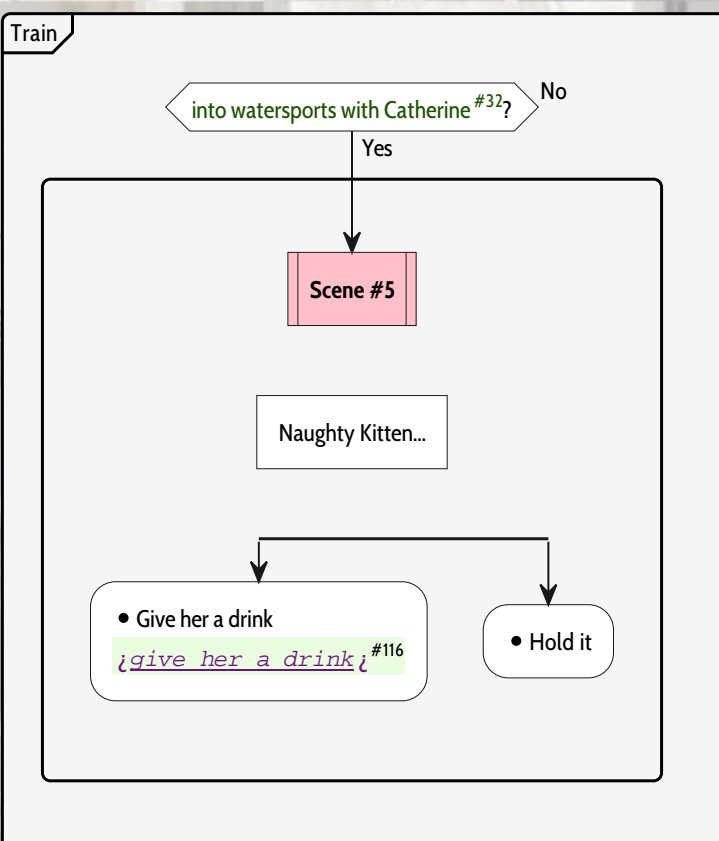
Yes

Scene #3

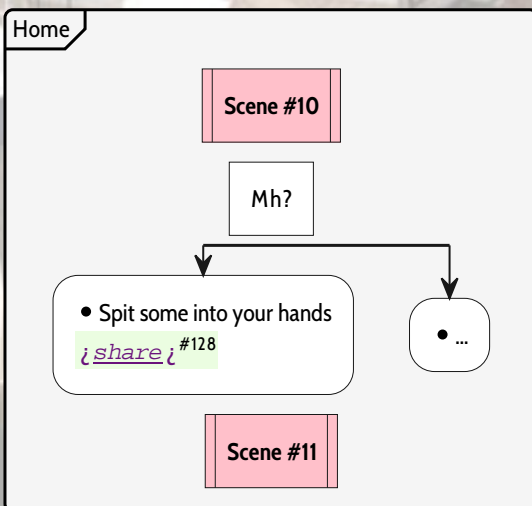
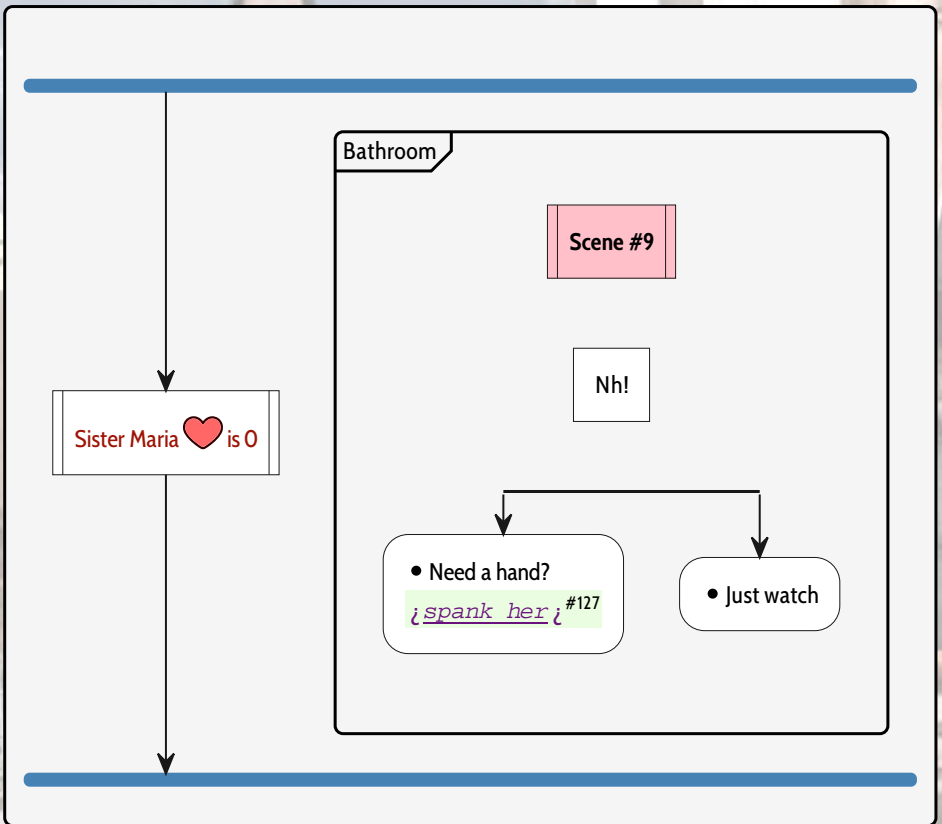
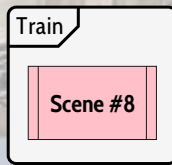
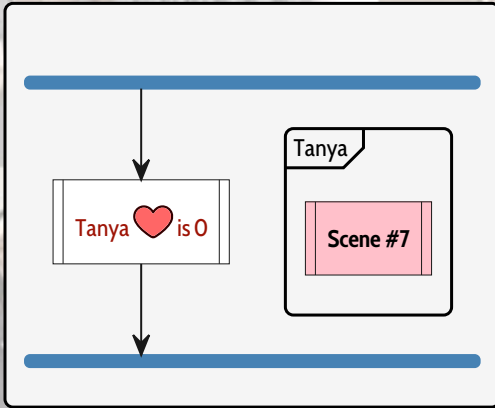
Grandma's House VO.39

Jamila

Scene #4

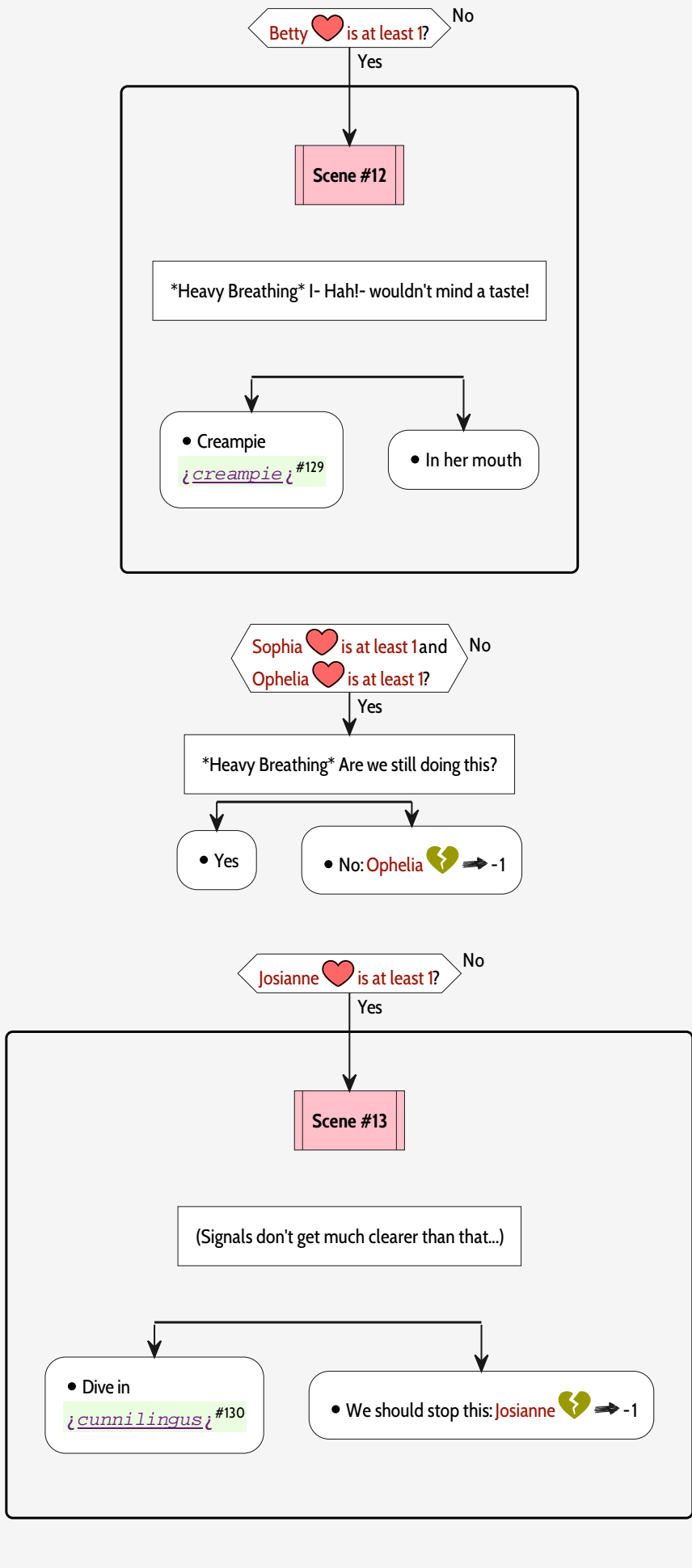


Grandma's House V0.40

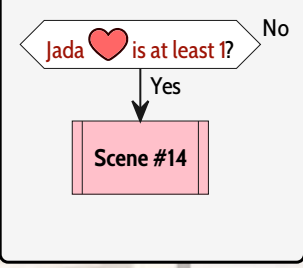


Grandma's House V0.41

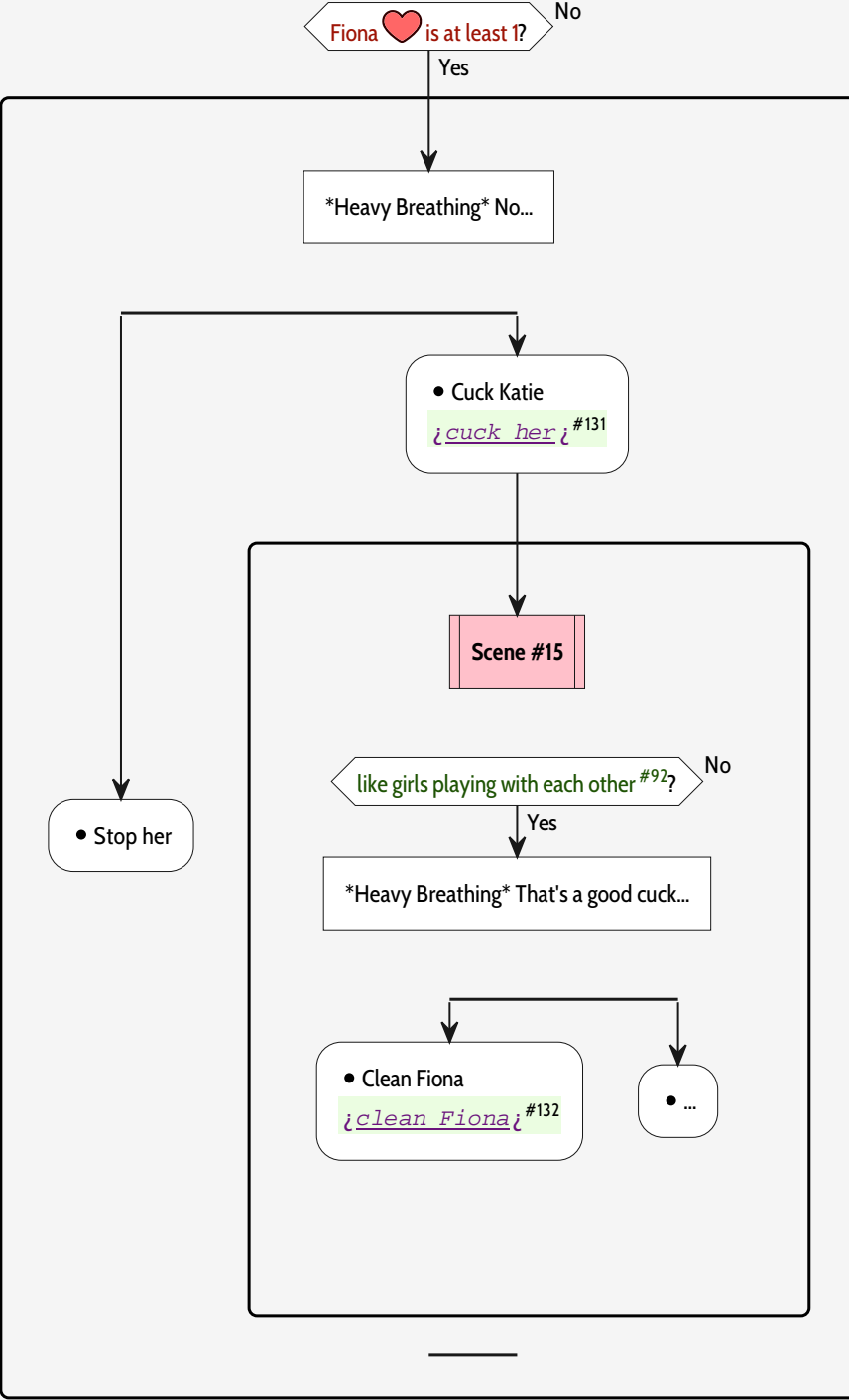
Work



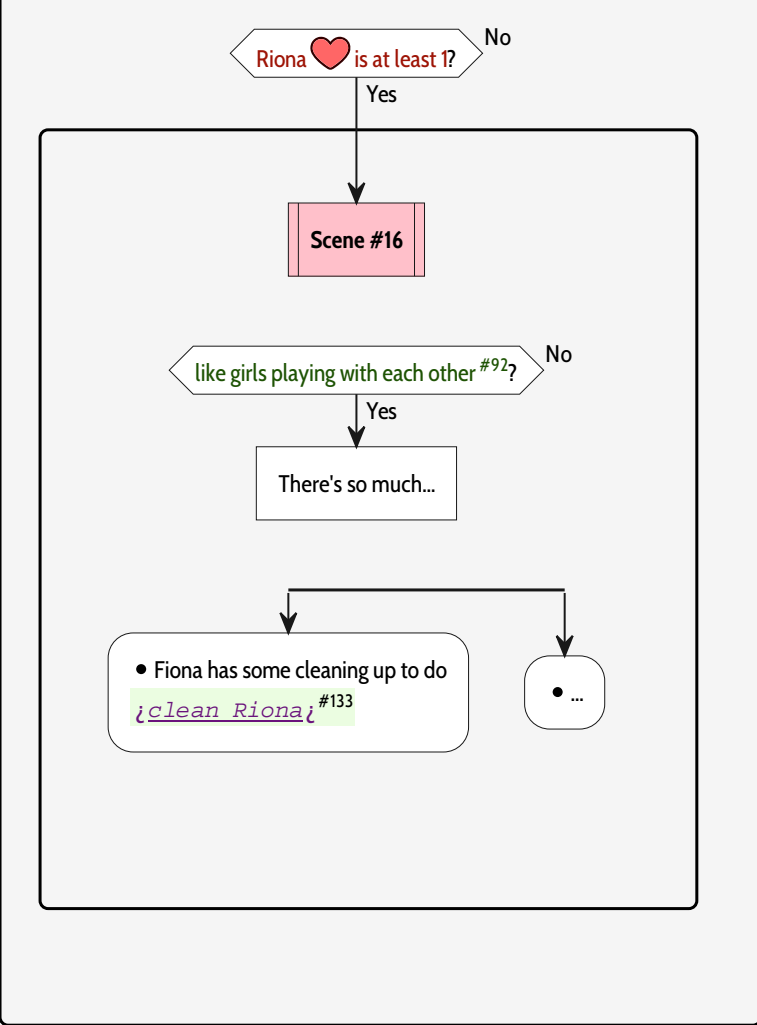
Home



Bar

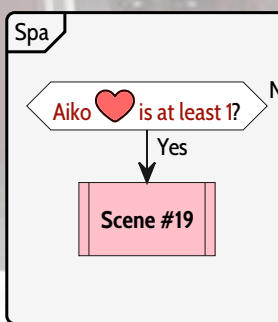
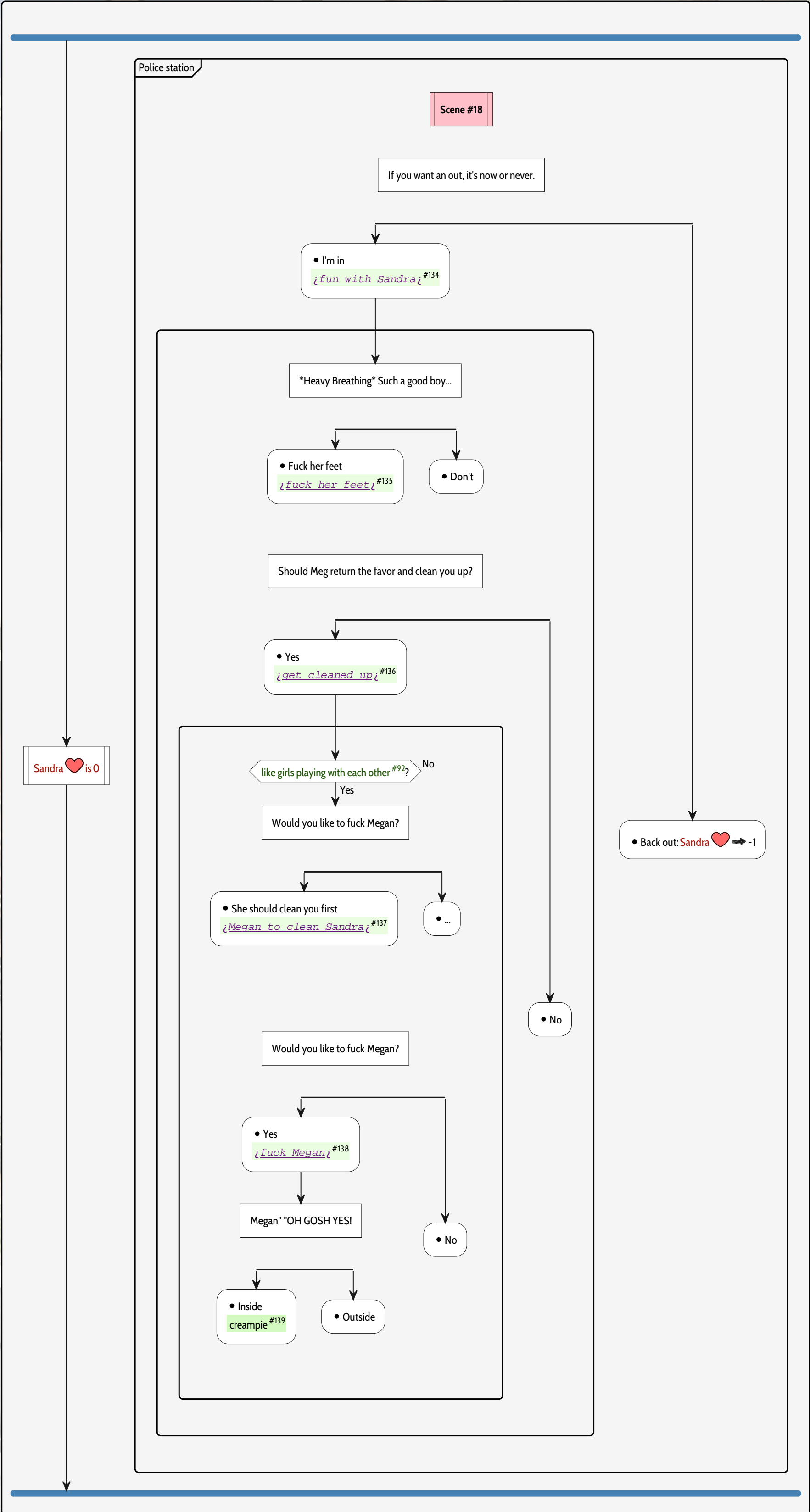
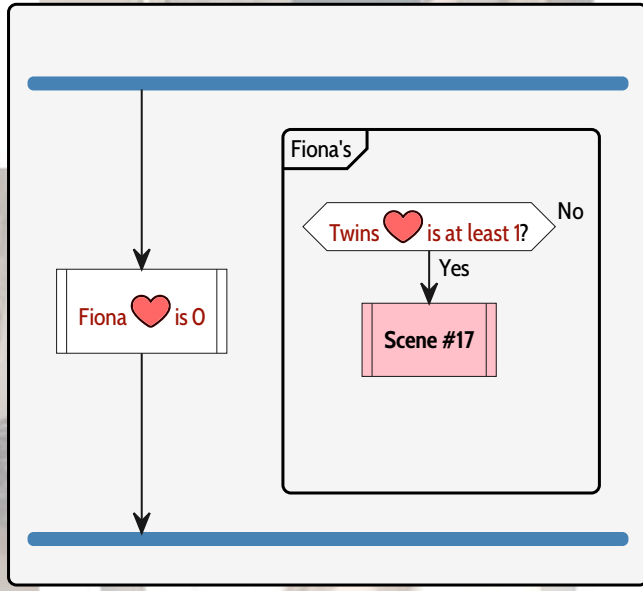


Fiona's



Fiona ❤️ is 0

Grandma's House
V0.42



Grandma's House V0.43

Spa

split a banana with Asami? #76?

No

Yes

Oh, that's some really poor phrasing...

• Yes

{titfuck} #140

Scene #20

• No

Scene #21

You notice Shizuka peeking from behind a corner.

• Call her over

{call her over} #141

Heavy Breathing Hah... Such a naughty mom...

• Don't

• Embarrass her in front of ...

{embarrass her} #142

• Don't

I...

• Clean up duty

{clean you} #143

You have to help me!

• Nope

• Help her

{Asami can depthroat} #144

{depthroat Asami} #145

• Don't push yourself

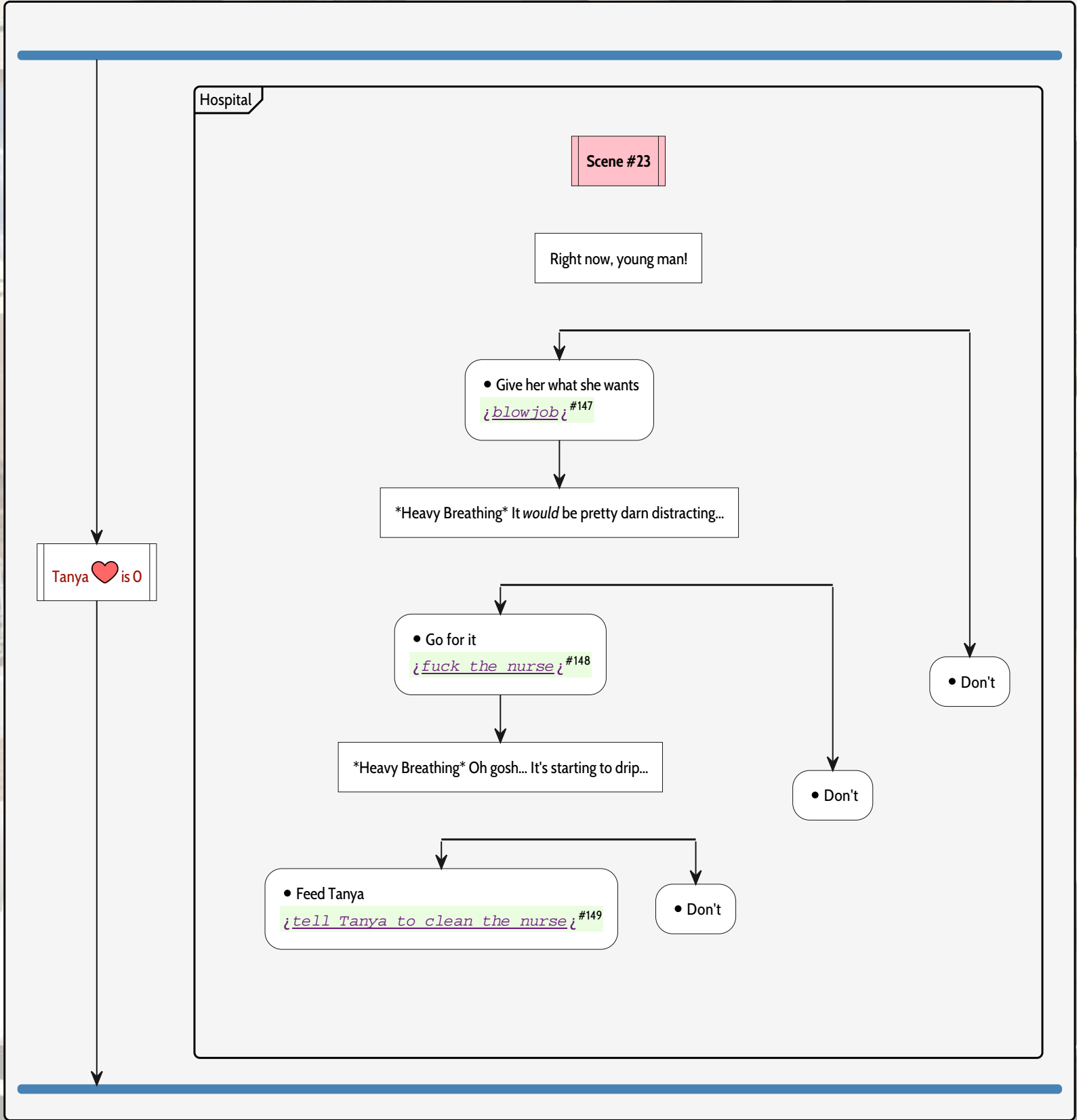
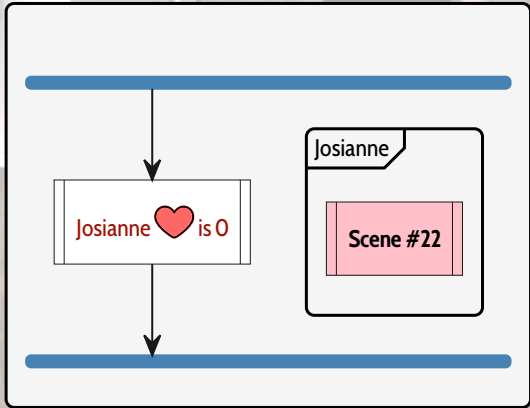
Heavy Breathing ... Slow down... You are going to break her...

• Eat Asami's ass

{eat her ass} #146

• Don't

Grandma's House
V0.44



Grandma's House V0.45

Home

split a banana with Asami #76?

No

Yes

C-Can you help me up?

• Help her to the couch

• Fuck her tits

{fuck her tits} #150

Scene #24

Hah!

• In her mouth

{in her mouth} #151

• On her tits

Natalia

Scene #25

Deep Breath Hah!

• Eat her out

{eat her out} #152

• Don't

Grrr...

• Rub it in

{rub it in} #153

• Don't

Natalia ❤️ is 0

Ophelia's

into watersports with Catherine #32?

No

Yes

She drops to her knees and opens her mouth.

• Use Katie

{use Catherine} #154

• Use the toilet

Annabelle ❤️ is at least 1?

No

Yes

Scene #26

I DID NOT!

• Discipline her

Heavy Breathing Hah...

• Facefuck her

{facefuck her} #155

• Go easy on her

Hmmm...

• Banana butt plug

{banana butt plug} #156

• Finger her ass

• End her training

Annabelle 💔 ➡️ -1

Grandma's House V0.46

Elizabeth's

Polly ❤️ is at least ? No

Yes

Scene #27

Car

Scene #28

Priya

Oh!

• Go down on her

cunnilingus #157

Scene #29

• Don't

Priya ❤️ is 0

Scene #30

Laughs That's not carpet...

• Help her up

• Eat her ass

eat her ass #158

Grandma's House V0.47

Jamila's

Scene #31

ok with drinking Jamila's breast milk #66? No

Yes

Heavy Breathing Love...

• Drink up

drink up #159

• Don't

Scene #32

Home

into watersports with Catherine #32? No

Yes

Scene #33

She nods.

• Give her a drink

give Catherine a drink #160

• Don't

Restaurant

Scene #34

Taxi

Scene #35

Grandma's House V0.48

Garage

I believe there is something there that can help.

- Take her to the office

Imogene ❤️ ⇒ 1

blow job #161

Scene #36

Woman" "Mh!

- Warn her

- Don't

swallow #162

- Send her a bill

Home

Scene #37

Jada's

Scene #38

I'm- Hah!

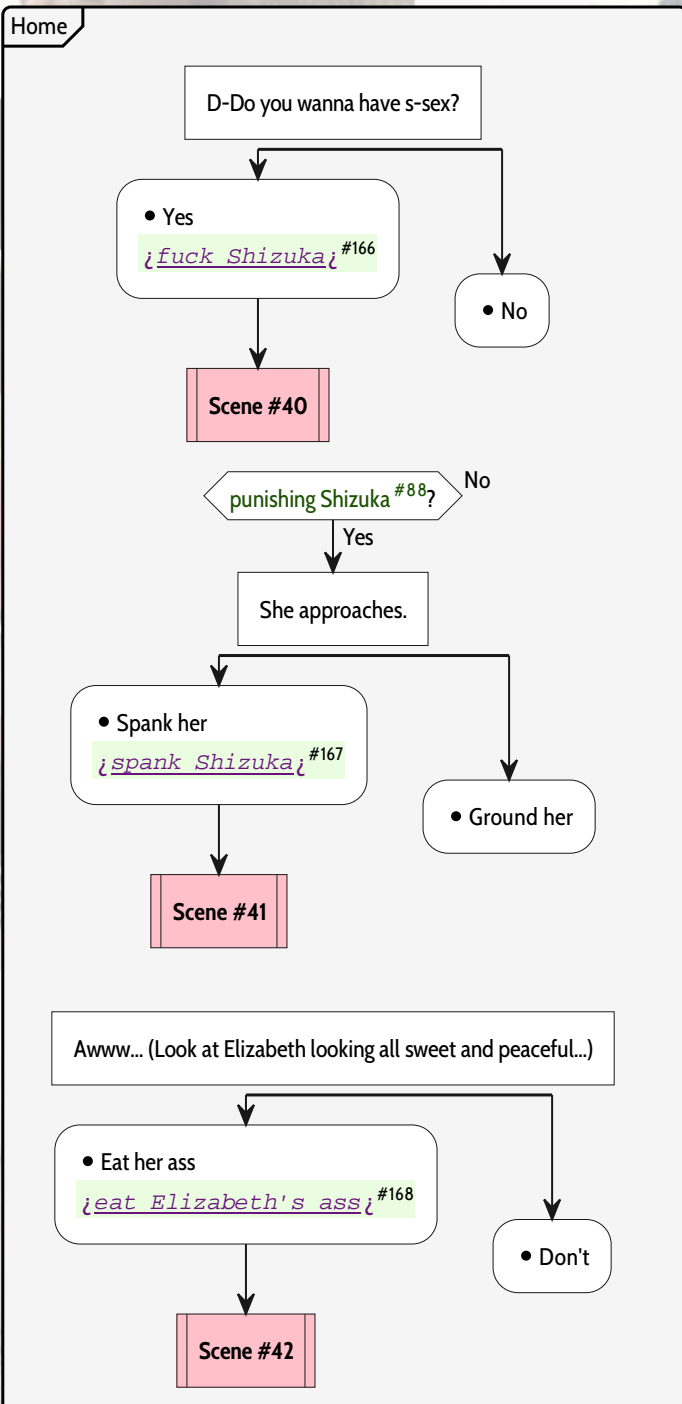
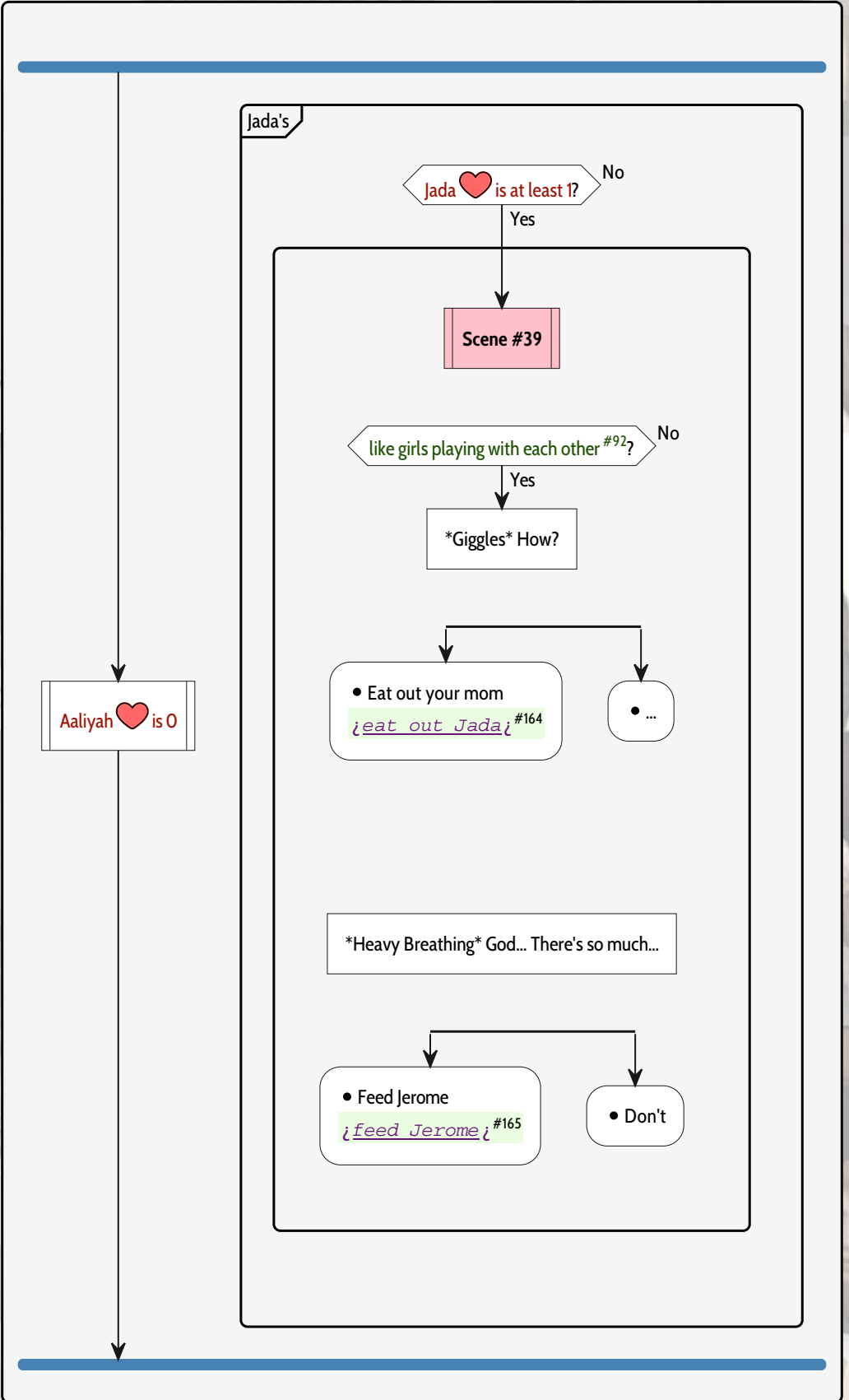
Aaliyah ❤️ is 0 or less

- Finger her ass

finger her ass #163

- Don't

Grandma's House V0.49



Grandma's House V0.50

Dojo

Scene #43

You slip your hand between her thighs and start to massage her slit.

- Spank her

spank Jasmine #169

- Don't

She arches her back, giving you a better angle.

- Pull her hair

pull her hair #170

- Don't

Jasmine ❤️ is 0

Home

Scene #44

Grandma's House V0.51

Hotel

Scene #45

Scene #46

ok with drinking Jamila's breast milk #66? No

Yes

Show her how much you love her!

- Drink from her

drink from her #171

- Don't

Jamila's home

Scene #47

ok with drinking Jamila's breast milk #66? No

Yes

She fills her bowl with milk and moves to fill yours.

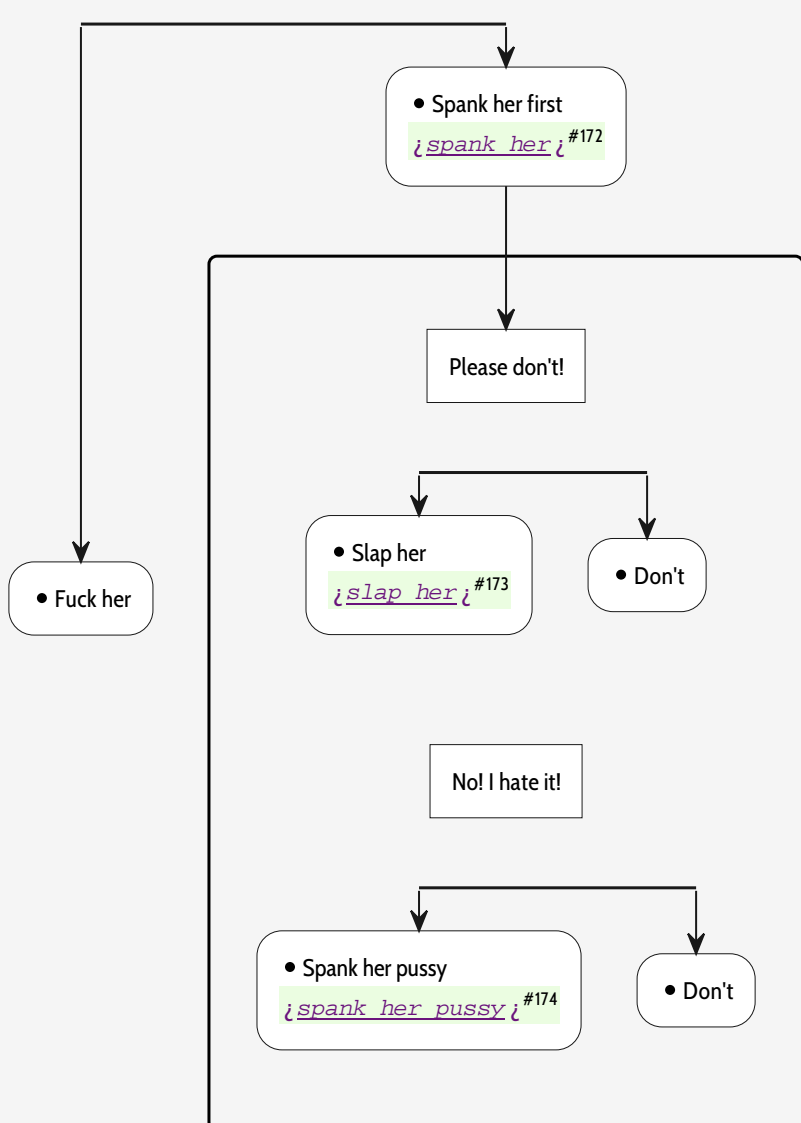
- Stop her

- Don't

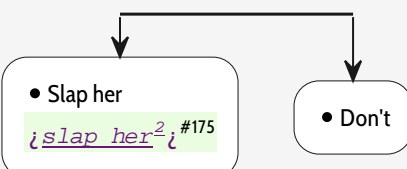
Scene #48

Scene #49

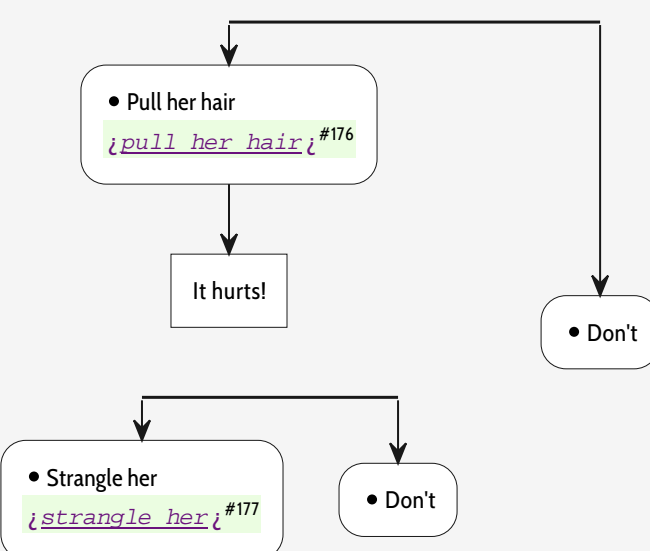
I'll do anything!



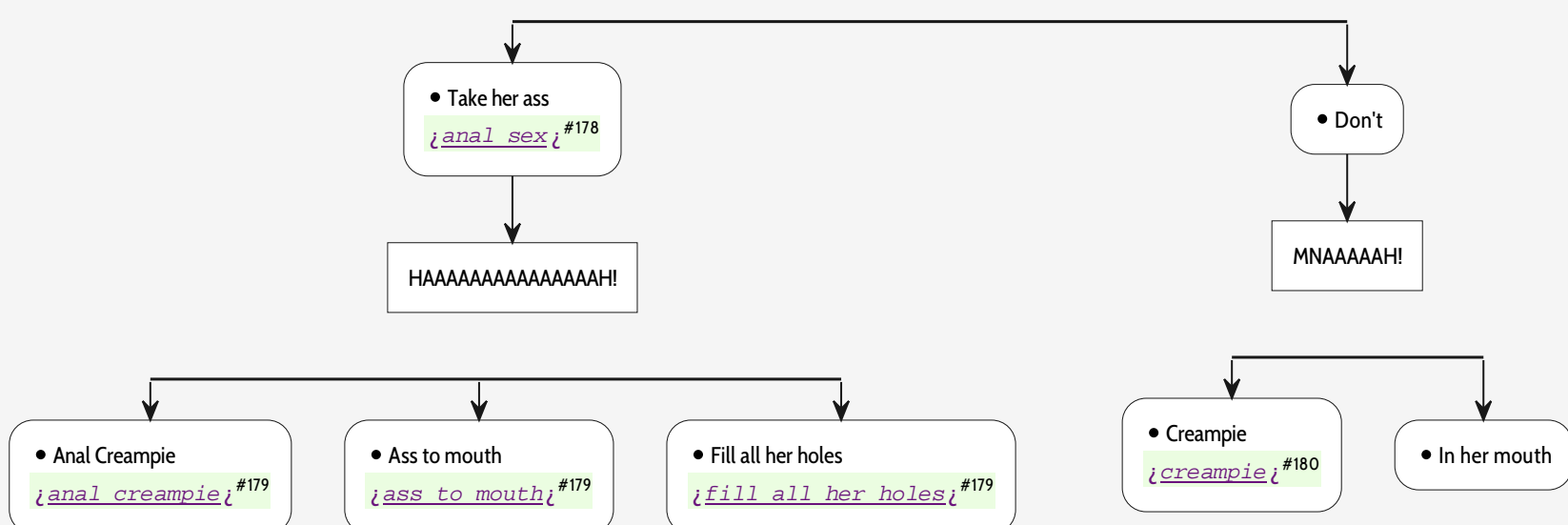
She starts to go cross-eyed as she's overwhelmed.



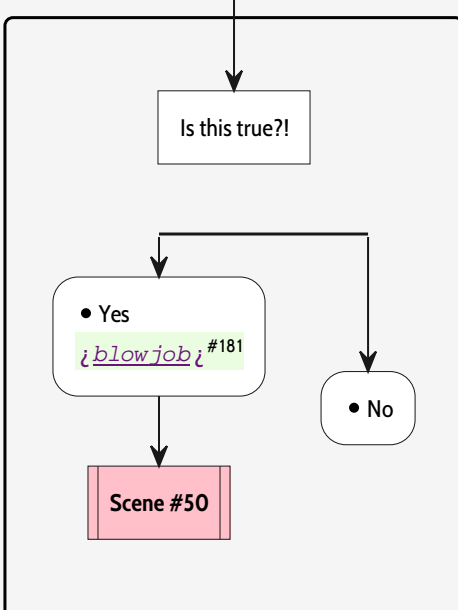
You keep railing your little pet.



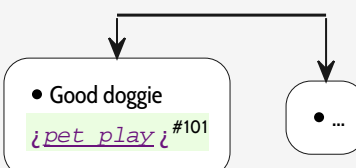
Her walls massaging your shaft.



Minnie is at least 1? No



You pat her head.



Mila is 0

Grandma's House V0.53

Home

Scene #52

Greedy Kitten...

• Spit some in your mom's mouth
¿Catherine spits in Elizabeth's mouth¿ #182

• ...

Scene #53

Hah!

• Finger her ass
¿finger Elizabeth's ass¿ #183

• Don't

Yeah I guess there's nothing wrong with that.

• Get some pee videos
watersports with Asami #184

• Don't

(That's probably her.)

• Peep
¿peep on Asami¿ #185

• Don't

Garage

Only available if impregnated the woman in the elevator
and got a blowjob from the police officer #59
and fucked the housekeeper #58
¿nuns worship your cock¿ #186

Ummm... P-Personal service...

• Negotiate the benefits
¿negotiate the benefits¿ #187

• Sign the contract

Scene #54

Bar

Scene #55

Treehouse

Scene #56

like girls playing with each other #92?

No

Ouch!

• Clean each other off
¿tell the twins to clean each other¿ #188

• Wipe yourselves off

Twins ❤️ is 0

